

387.736
T26
1996-97
cop. 2



1996-97

ILLINOIS AIRPORT DIRECTORY

The Library of the

57 106



Illinois Department of Transportation

University of Illinois
Urbana-Champaign

EQUIPMENT CODES

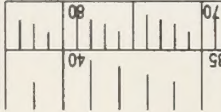
SEC
WAC

TRANSPONDER

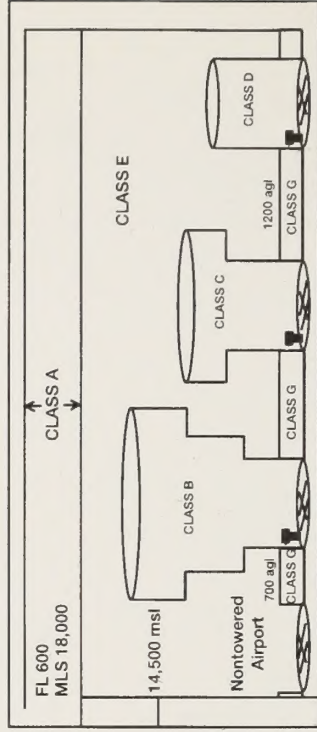
Special Equipment	None	Non-Altitude Reporting	Altitude Reporting
None	X	T	U
DME	D	B	A
TACAN	M	N	P
RNAV	W	C	R

Note: Equipment code for IFR approved GPS is /G.

WAC CHARTS (14 N.M. PER INCH)

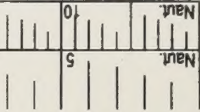


NEW AIRSPACE CLASSIFICATION



msl - mean sea level
agl - above ground level
FL - flight level

SECTIONAL (7 N.M. PER INCH)



SEC
WAC

ILLINOIS AIRPORT DIRECTORY

Published by the

Illinois Department of Transportation

Division of Aeronautics

1 Langhorne Bond Drive

Capital Airport

Springfield, Illinois 62707-8415

(217) 785-8516

CAUTION

To the users of this Directory:

The purpose of this Directory is to provide general information for VFR flying that may be useful to a pilot in planning a flight or in communicating with a particular airport. It is not intended to be relied upon as a completely accurate depiction of existing airport conditions.

Everyone involved in the production of this document has strived to ensure that the information contained herein is accurate. However, it is always possible that errors have been made. Also, conditions at an airport can change at any time. Accordingly, the user is cautioned against using this document as a sole source for obtaining Illinois airport information. The user should obtain the latest information from all available sources prior to flight. Such sources include, but are not limited to the *Aeronautical Information Manual*, the current *Airport/Facility Directory*, and FAA's *Notices to Airmen (NOTAMS)*. Telephone numbers of the airport owners, managers, and operators have also been included for your use.

Remember, the pilot in command is responsible for the safety of the flight. That includes obtaining the most accurate information available. *This Directory alone will not fulfill that obligation!*



STATE OF ILLINOIS
OFFICE OF THE GOVERNOR
SPRINGFIELD 62706

JIM EDGAR
GOVERNOR

August 1, 1996

Greetings:

As Governor of Illinois, I am pleased to recognize the Illinois aviation community for your part in the state's economic growth.

Transportation, including aviation, contributes billions of dollars to the state's economy. This year, more than \$168.6 million in improvements are planned at Illinois airports. By the year 2001, Illinois is planning to spend more than \$650 million on preservation, modernization and expansion programs at Illinois airports.

Illinois has received nationwide recognition as a progressive leader in the field of aviation. The Illinois Department of Transportation's Division of Aeronautics has maintained and improved upon one of the finest state airport systems in the nation. The staff has been recognized nationally for its leadership in the field of aviation safety, education and program development.

On behalf of the more than 11 million citizens of the State of Illinois, I want to thank the pilots, airport sponsors, the Fixed Base Operators of the public and private airports and all others who have contributed to this great industry.

Sincerely,

A large, handwritten signature in black ink that reads "Jim Edgar".

Jim Edgar
GOVERNOR



Illinois Department of Transportation

Division of Aeronautics
One Langhorne Bond Drive/Capital Airport
Springfield, Illinois 62707-8415

August 1, 1996

To All Illinois Pilots:

The Illinois Department of Transportation, Division of Aeronautics, is pleased to present the 1996-1997 Illinois Airport Directory of airports that are open to the public. Due to limited resources, we have not included Missouri airports located in the St. Louis region, nor have we included private Restricted Landing Areas or Residential Airports.

By now, you have probably noticed that this twenty-fifth edition is quite different from those of previous years. In addition to the top binding, we have adopted a cleaner and, hopefully, more readable format to aid in finding the necessary information. We have increased the size of the print and utilized more annotations on the photographs to identify important visual cues. Where applicable, we have included information about flight restriction, noise abatement, and other important procedures.

The Illinois Airport Directory has been produced with the support and input from Illinois pilots, airport managers, fixed based operators and the Division staff. To the best of our knowledge, the information in the Directory was current and correct when it was sent to the printer. Because airport conditions and services may change, ***pilots are cautioned to consult all available flight planning sources prior to flight***. These should include the Airport Facility Directory, the Aeronautical Information Manual, current NOTAMS and the latest FAA Sectional Charts. Sometimes a simple phone call to the facility can save time and money, as well as prevent embarrassment or a potential life threatening situation.

We welcome you to enjoy the wonderful airport facilities of Illinois. Please fly safely. Remember, we all share in the responsibility of keeping flying the safest mode of transportation available!

Sincerely,

William L. Blake
William L. Blake
Director

TABLE OF CONTENTS

Title Page	i
Disclaimer	ii
Letter from Governor Edgar	iii
Letter from Director Blake	iv
Table of Contents	1
Illinois Airport Location Map	2
Index of Airports	3
Airport Legend Information	6
Legend	7
Illinois Airports – Listed Alphabetically by City	9
Directory Illinois Department of Transportation – Division of Aeronautics	129
Airport Operations – Hand Signals	131
Light Gun Signals	132
Phonetic Alphabet – Morse Code	132
Wind Chart for Take – Off	133
METAR Abbreviations	134
Pilot Registration Form	135
Aircraft Registration Form	137
ELT – How to Operate It	139

Illinois Airport Location Map

June 1996



INDEX OF AIRPORTS

Page	City	Airport Name	County
9	Aledo	Mercer County	Mercer
10	Alton	St. Louis Regional	Madison
11	Apple River	Apple Canyon	Jo Daviess
12	Aurora	Aurora Municipal	Kane
13	Beardstown	Greater Beardstown	Cass
14	Benton	Benton Municipal	Franklin
15	Bloomington-Normal	Central Illinois Regional	McLean
16	Cahokia	St. Louis Downtown Parks	St. Clair
17	Cairo	Cairo Regional	Alexander
18	Canton	Ingersoll	Fulton
19	Carbondale	Southern Illinois	Jackson
20	Carmi	Carmi Municipal	White
21	Carthage	Carthage	Hancock
22	Casey	Casey Municipal	Clark
23	Centralia	Centralia Municipal	Marion
24	Champaign	U of I Willard	Champaign
25	Chicago	Meigs	Cook
26	Chicago	Midway	Cook
27	Chicago	O'Hare International	Cook
28	Columbia	Sackman Field	Monroe
29	Compton	Bresson	Lee
30	Danville	Vermilion County	Vermilion
31	Decatur	Decatur	Macon
32	DeKalb	Taylor Municipal	DeKalb
33	Dixon	Walgreen Field	Lee
34	Dwight	Dwight	Livingston
35	Earlville	Earlville	LaSalle
36	East Moline	McNeal Field Ultralight STOL	Rock Island
37	Effingham	County Memorial	Effingham
38	Fairfield	Fairfield Municipal	Wayne
39	Flora	Flora	Clay
40	Frankfort	Frankfort	Will
41	Freeport	Albertus	Stephenson
42	Freeport	Dornink	Stephenson
43	Galesburg	Galesburg Municipal	Knox
44	Geneseo	Gen-Air Park	Henry
45	Gibson City	Schertz Field	Ford
46	Grayslake	Campbell	Lake
47	Greenville	Greenville Municipal	Bond

Page	City	Airport Name	County
48	Greenwood	Wonder Lake-Galt	McHenry
49	Harrisburg	Raleigh	Saline
50	Harvard	Dacy	McHenry
51	Havana	Havana Regional	Mason
52	Highland	Winet	Madison
53	Hillsboro	Hillsboro Municipal	Montgomery
54	Hinckley	Hinckley	DeKalb
55	Jacksonville	Jacksonville Municipal	Morgan
56	Joliet	Joliet Park District	Will
57	Kankakee	Greater Kankakee	Kankakee
58	Kankakee	Kankakee	Kankakee
59	Kewanee	Kewanee Municipal	Henry
60	Lacon	Marshall County	Marshall
61	Lake in the Hills	Lake in the Hills	McHenry
62	Lansing	Lansing Municipal	Cook
63	Lawrenceville	Lawrenceville-Vincennes	Lawrence
64	Leaf River	West Grove	Ogle
65	Leland	Miller	LaSalle
66	Lincoln	Logan County	Logan
67	Litchfield	Litchfield Municipal	Montgomery
68	Lostant	Hartenbower-Hectares	LaSalle
69	Macomb	Macomb Municipal	McDonough
70	Macomb	Smith	McDonough
71	Manito	Mitchell	Tazewell
72	Marion	Williamson County Regional	Williamson
73	Mattoon	Coles County Memorial	Coles
74	Metropolis	Metropolis Municipal	Massac
75	Moline	Quad City	Rock Island
76	Moline	(Seaplane Base)	Rock Island
77	Monee	Sanger	Will
78	Monmouth	Monmouth Municipal	Warren
79	Monticello	Piatt County	Piatt
80	Morris	Morris Municipal-Washburn Field	Grundy
81	Mt. Carmel	Mt. Carmel Municipal	Wabash
82	Mt. Morris	Ogle County	Ogle
83	Mt. Sterling	Mt. Sterling Municipal	Brown
84	Mt. Vernon	Mt. Vernon	Jefferson
85	Newark	Cushing Field	LaSalle
86	New Lenox	Howell	Will
87	Olney	Olney-Noble	Richland
88	Ottawa	Sky Dive Chicago	LaSalle

Page	City	Airport Name	County
89	Palmyra	Zelmer Memorial Airpark	Macoupin
90	Paris	Edgar County	Edgar
91	Paxton	Paxton Municipal	Ford
92	Pekin	Pekin Municipal	Tazewell
93	Peoria	Greater Peoria Regional	Peoria
94	Peoria	Mt. Hawley	Peoria
95	Peru	Illinois Valley Regional	LaSalle
96	Pinckneyville	Pinckneyville-DuQuoin	Perry
97	Pittsfield	Pittsfield Penstone	Pike
98	Plainfield	Clow	Will
99	Pontiac	Pontiac Municipal	Livingston
100	Poplar Grove	Poplar Grove	Boone
101	Quincy	Baldwin Field	Adams
102	Rantoul	Rantoul National Aviation Center	Champaign
103	Robinson	Robinson Municipal	Crawford
104	Rochelle	Rochelle Municipal	Ogle
105	Rockford	Cottonwood	Winnebago
106	Rockford	Greater Rockford	Winnebago
107	Romeoville	Lewis University	Will
108	Rushville	Schuy-Rush	Schuyler
109	St. Jacob	St. Louis Metro East-Shafer	Madison
110	Salem	Salem Leckrone	DeKalb
111	Savanna	Tri-Township	Carroll
112	Schaumburg	Schaumburg Regional	Cook
113	Shelbyville	Shelby County	Shelby
114	Sparta	Sparta Community	Randolph
115	Springfield	Capital	Sangamon
116	Springfield	Holmes	Sangamon
117	Sterling-Rock Falls	Rock Falls-Whiteside County	Whiteside
118	Streator	Streator	LaSalle
119	Taylorville	Taylorville Municipal	Christian
120	Tuscola	Tuscola	Douglas
121	Urbana	Frasca Field	Champaign
122	Vandalia	Vandalia Municipal	Fayette
123	Vincennes, IND	O'Neal	Lawrence
124	Waukegan	Waukegan Regional	Lake
125	West Chicago	DuPage	DuPage
126	Wheeling	Palwaukee Municipal	Cook
127	Yates City	Tri-County	Knox

AIRPORT LEGEND INFORMATION

1. Airspace Class: (IFR) indicates instrument approach at airport.
2. Name: Airport name.
3. Ident: FAA airport identifier.

COMMUNICATION

4. TWR/CTAF: Common Traffic Advisory Frequency which may be UNICOM, Multicom, FSS or Tower frequency as appropriate.
5. GND CON: Ground Control frequency.
6. ATIS: Automatic Terminal Information Service frequency.
7. UNICOM: Airport or Fixed Base Operator frequency.
8. APP/DEP: Intended for VFR traffic advisories. a. Identifier, b. Frequency
Note: Some frequencies noted are ATC center frequencies and not intended for VFR use; therefore, use with discretion.
9. RCO: Remote Communications Outlet, intended for direct communications with FSS on ground. a. Identifier, b. Frequency
10. LIGHTS: Light bulb symbol on photo with "P" indicates Pilot Controlled Lighting with frequency noted in data information box. Check A/FD for Rwy(s) lights/REIL/VASI activation sequencing using PCL. "T" indicates lighting available by telephone request. If light bulb symbol left blank, no PCL available. i.e. lighting is controlled manually or, timer, or by photo cell. No Rwy lighting available if symbol for lighting is not indicated on photo. Check A/FD for Rwy lighting information when tower closed.

NAVIGATION

11. ELEV: Airport elevation as listed in A/FD.
 12. LAT/LONG: Approximate latitude/longitude of the center of the airport, as listed in A/FD.
 - 13 a. Identifier of navigation aid.
b. Frequency of navigation aid.
c. Magnetic bearing to airport from the radio aid to navigation.
d. Distance (NM) in nautical miles to airport from the radio aid to navigation.
14. Automated Weather reporting service frequency and or telephone number.

SERVICES

15. FUEL: Type and octane of fuel available; Mogas (Auto), 80, 100LL, or Jet A/B.
16. FBO: Fixed Base Operator's name and telephone number, who provide fuel or maintenance.
17. Airport Manager's name and telephone number and additional information.
18. Additional remarks not otherwise noted.

Note: Unless otherwise noted, all traffic patterns will be left hand at an altitude of 800' AGL.

Picture Legend



beacon



windcone



tetrahedron



windtee



fence line



pole line



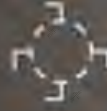
runway lighting



pilot controlled
runway lighting



telephone request
runway lighting



segmented circle
with traffic arms



dimensions for
seaplane bases



obstruction
height in feet



runway dimensions



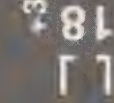
turf or soft
surface runway



displaced
threshold



parachute activity



+350 GRVL
distance beyond
threshold &
surface type

Communication

TWR/CTAF: (4)
GND CON: (5)
ATIS: (6)
UNICOM: (7)
APP/DEP:(8a) (8b)
RCO: (9a) (9b)
LIGHTS: (10)

Airport Manager: (17)

Remarks: (18)

ELEV: (11)
LAT: (12)
LON: (12)
VOR: (13a) (13b)
(13c) (13d)
AWOS: (14)

Navigation

Services

FUEL: (15)
FBO: (16)



Communication

TWR/CTAF: 122.9
 GND CON:
 ATIS:
 UNICOM:
 APP/DEP:
 RCO:
 LIGHTS:

Navigation

ELEV: 740'
 LAT: 41°14.92'
 LON: 90°44.23'
 VOR: 114.4 MZV
 225°
 AWOS:

Services

FUEL:
 FBO:

Airport Manager: Jim Perrin - 309-582-9020

**Communication**

TWR/CTAF: 126.0
 GND CON: 120.2
 ATIS: 128.0
 UNICOM: 122.95
 APP/DEP:STL 124.2
 RCO:STL FSS 122.05
 LIGHTS: 126.0

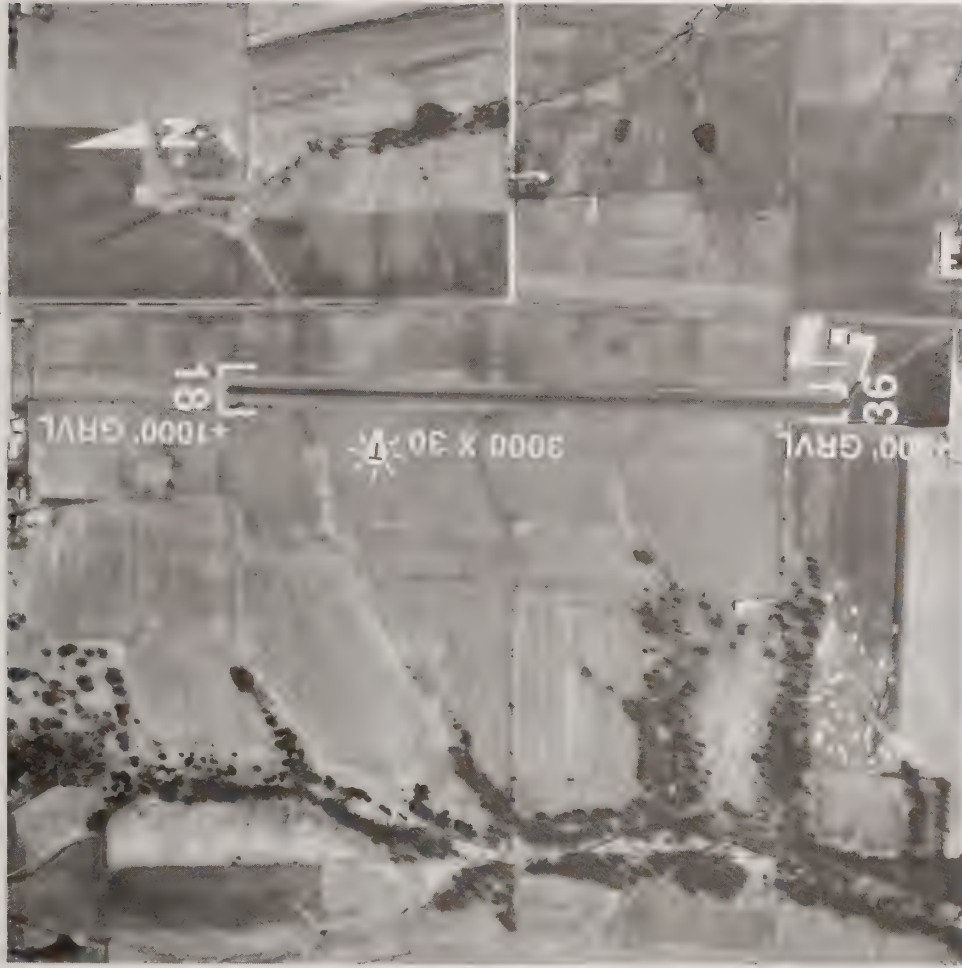
Navigation

ELEV: 544'
 LAT: 38°53.42'
 LON: 90°02.76'
 VOR: 116.0 TOY
 323° 10.9 NM
 AWOS:

Services

FUEL: 100LL,Jet A
 FBO:
 Premier Air
 618-259-3230
 Langa Air
 618-258-1005

Airport Manager: Marion Richardson - 618-259-2531
 NDB on field - 263 (CVM)

**Communication**

TWR/CTAF: 122.8
 GND CON:
 ATIS:
 UNICOM: 122.8
 APP/DEP:
 RCO:
 LIGHTS:

Navigation

ELEV: 990'
 LAT: 42°27.00'
 LON: 90°10.16'
 VOR: 115.8 DBQ
 079°
 AWOS:

Services

FUEL: 100LL
 FBO:
 Contact Airport
 Manager

Airport Manager: Asher Foster - 815-492-2510
 For lights phone 815-492-2510/2298
 Attended irregularly

**Communication**

TWR/CTAF: 120.6
 GND CON: 121.7
 ATIS: 125.85
 UNICOM: 122.95/123.5
 APP/DEP: CHI 133.5
 RCO:
 LIGHTS: 120.6

Navigation

ELEV: 706'
 LAT: 41°46.26'
 LON: 88°28.37'
 VOR: 108.4 DPA
 216° 9 NM
 AWOS:
 708-466-4024

Services

FUEL: 100LL, Jet A
 FBO:
 Viking Express
 708-466-7500
 Luminair, Inc.
 708-466-4866

Airport Manager: Bob Rieser - 708-466-7000
 Noise abatement ATIS.



Communication

TWR/CTAF: 122.9
 GND CON:
 ATIS:
 UNICOM:
 APP/DEP:
 RCO:
 LIGHTS: 122.9

Navigation

ELEV: 465'
 LAT: 39°58.40'
 LON: 90°24.22'
 VOR: 112.7 CAP
 274° 36.3 NM or
 108.6 IJX 326° 14.2 NM
 AWOS:

Services

FUEL:
 FBO:

Airport Manager: Bob Burget - 217-323-3421

**Communication**

TWR/CTAF: 122.8
 GND CON:
 ATIS:
 UNICOM: 122.8
 APP/DEP
 RCO:
 LIGHTS:

Navigation

ELEV: 444'
 LAT: 38°00.41'
 LON: 88°56.07'
 VOR: 115.0 ENL
 153° 27NM
 AWOS:

Services

FUEL: 100LL
 MOGAS
 FBO:
 Casey Aviation
 618-435-3526

Airport Manager: Charles Casey - 618-435-3526

NDB on field - 414 (BEE) - out of service indefinitely



Communication

TWR/CTAF: 124.6
 GND CON: 121.65
 ATIS: 135.35
 UNICOM: 122.95
 APP/DEP: PIA 118.05
 RCO: 123.6R, 108.2T*
 LIGHTS: 124.6

Navigation

ELEV: 875'
 LAT: 40°28.83'
 LON: 88°55.43'
 VOR: 108.2 BMI
 On Field
 AWOS:

Services

FUEL: 100LL, JET A
 FBO:
 APEX Flight Services
 309-663-2303
 Bloomington Avionics
 309-663-2713

Airport Manager: Michael B. LaPier - 309-663-7383

*RCO is IKK FSS



Communication

TWR/CTAF: 120.9
 GND CON: 121.8
 ATIS: 127.85
 UNICOM: 122.95
 APP/DEP: STL 123.7
 RCO:
 LIGHTS: 120.9

Navigation

ELEV: 413'
 LAT: 38°34.24'
 LON: 90°09.37'
 VOR: 116.0 TOY
 224° 15.1 NM
 AWOS: 618-332-0001

Services

FUEL: 100LL,Jet A
 FBO:Midcoast Aviation
 618-337-2100
 AVTEC Inc.
 618-337-7800
 Ideal Aviation
 618-337-3400

Airport Manager: John Roach - 618-337-6060
 NDB on field - 375 (CPS)

**Communication**

TWR/CTAF: 122.8
 GND CON:
 ATIS:
 UNICOM: 122.8
 APP/DEP:MEM 128.05
 RCO:
 LIGHTS: 122.8

Navigation

ELEV: 321'
 LAT: 37°03.87'
 LON: 89°13.18'
 VOR: 113.1 CNG
 277°
 18.7 NM
 AWOS:

Services

FUEL: 100LL
 FBO:
 Alexander County
 Airport Authority
 618-734-0600

Airport Manager: Jim Zimmer - 618-734-0600
 NDB on field - 397 (CIR)

**Communication**

TWR/CTAF: 122.8
 GND CON:
 ATIS:
 UNICOM: 122.8
 APP/DEP:PIA 119.95
 RCO:
 LIGHTS: 122.8

Navigation

ELEV: 684'
 LAT: 40°34.15'
 LON: 90°04.49'
 VOR: 115.2 PIA
 239°
 AWOS:

Services

FUEL: 100LL
 FBO:
 Contact Airport
 Manager

Airport Manager: Ted Lambasio - 309-647-6976
 NDB on field - 236 (CTK)



Communication

TWR/CTAF:	125.35
GND CON:	121.8
ATTIS:	119.85
UNICOM:	122.95
APP/DEP:MKC	125.3
RCO:	
LIGHTS:	125.35

Navigation

ELEV:	411'
LAT:	37°46.71'
LON:	89°15.13'
VOR:	110.4 MWA
273°	11.5 NM
AWOS:	

Services

FUEL:	100L, Jet A
MOGAS	
FBO:	Southern Air Service
	618-529-2357

Airport Manager: Gary R. Shafer - 618-529-1721
 NDB (LOM) - 388 (MD)



Communication

TWR/CTAF: 122.8
 GND CON:
 ATIS:
 UNICOM: 122.8
 APP/DEP:EVV 127.35
 RCO:
 LIGHTS: 122.8

Navigation

ELEV: 388'
 LAT: 38°05.38'
 LON: 88°07.38'
 VOR: 113.3 PXV
 297°
 AWOS:

Services

FUEL: 100LL,
 MOGAS
 FBO:
 Contact Airport
 Manager

Airport Manager: Iris Sites - 618-382-7316 Airport - 618-384-2913 Home
 NDB on field - 332 (CUL)
 Parachute Jumping

**Communication**

TWR/CTAF: 122.8
 GND CON:
 ATIS:
 UNICOM: 122.8
 APP/DEP:
 RCC:
 LIGHTS: 122.8

Navigation

ELEV: 695'
 LAT: 40°24.15'
 LON: 91°09.91'
 VOR: 111.4 BRL
 205°
 AWOS:

Services

FUEL: 100LL
 FBO:
 Contact Airport
 Manager

Airport Manager: Terry Brunenn - 217-357-2173

**Communication**

TWR/CTAF: 122.8

GND CON:

ATIS:

UNICOM: 122.8

APP/DEP:HUF 125.45

RCO:

LIGHTS:

ELEV: 654'

LAT: 39°18.15'

LON: 88°00.24

VOR: 109.0 BIB

041° 32 NM

AWOS:

FUEL: 100LL

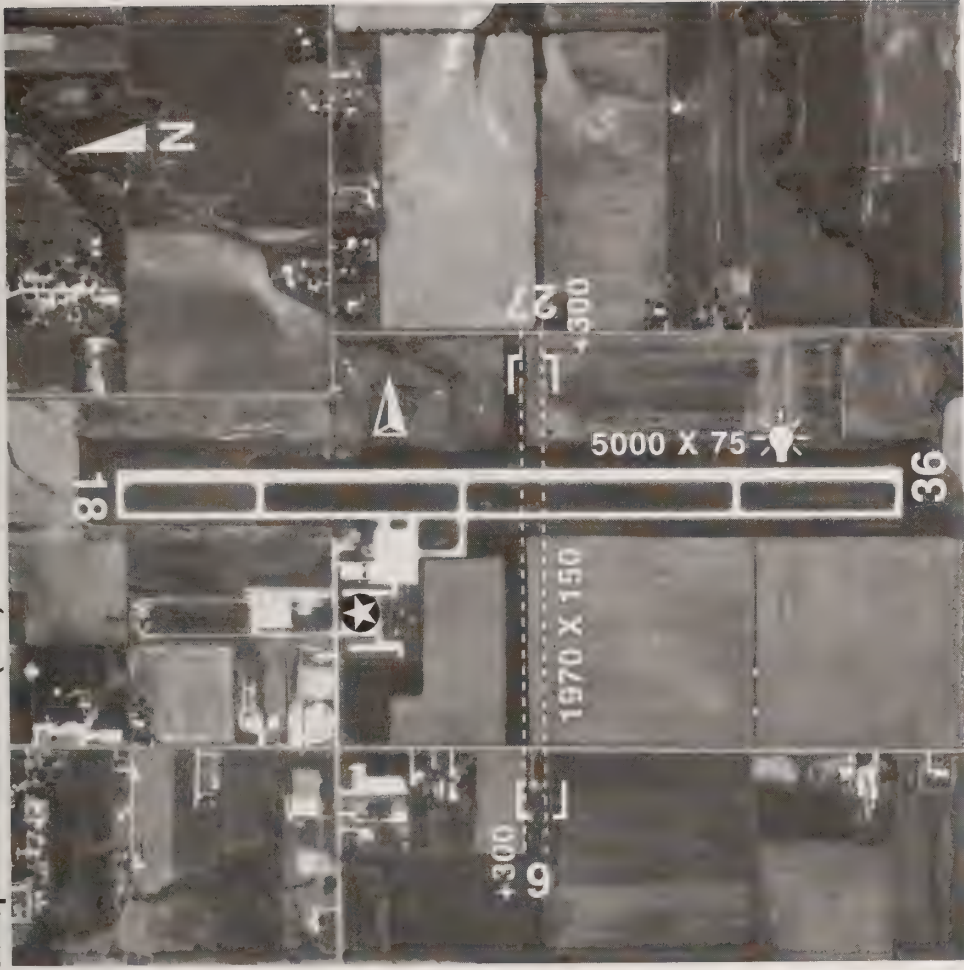
FBO:

Sky's The Limit

217-932-2078

Services

Airport Manager: Cleone Markwell - 217-932-2252
 NDB on field - 359 (CZB)



Communication

TWR/CTAF: 122.8
 GND CON:
 ATIS:
 UNICOM: 122.8
 APP/DE: MKC 127.7
 RCO:
 LIGHTS:

Navigation

ELEV: 534'
 LAT: 38°30.89'
 LON: 89°05.53'
 VOR: 115.0 ENL
 025° 6.5 NM
 AWOS:

FUEL: 100LL,Jet A

FBO:
 Airgo Inc.
 618-533-1643

Services

Airport Manager: Leslie Erb - 618-533-1643

For service after hours call 618-533-1626

**Communication**

TWR/CTAF: 120.4
 GND CON: 121.8
 ATIS: 124.85
 UNICOM: 122.95
 APP/DEP: 132.85
 RCO:STL FSS 122.45
 LIGHTS: 120.4

Navigation

ELEV: 754'
 LAT: 40°02.36'
 LON: 88°16.68'
 VOR: 110.0 CMI
 On Field
 AWOS:

Services

FUEL: 100LL,Jet A
 FBO:
 Flightstar Inc.
 217-351-7700

Airport Manager: Louis Midiri - 217-244-8604

**Communication**

TWR/CTAF: 121.3
 GND CON: 121.8
 ATIS: 127.35
 UNICOM: 122.95
 APP/DEP:CHI 118.4
 RCO:IKK FSS 122.15
 LIGHTS:

Navigation

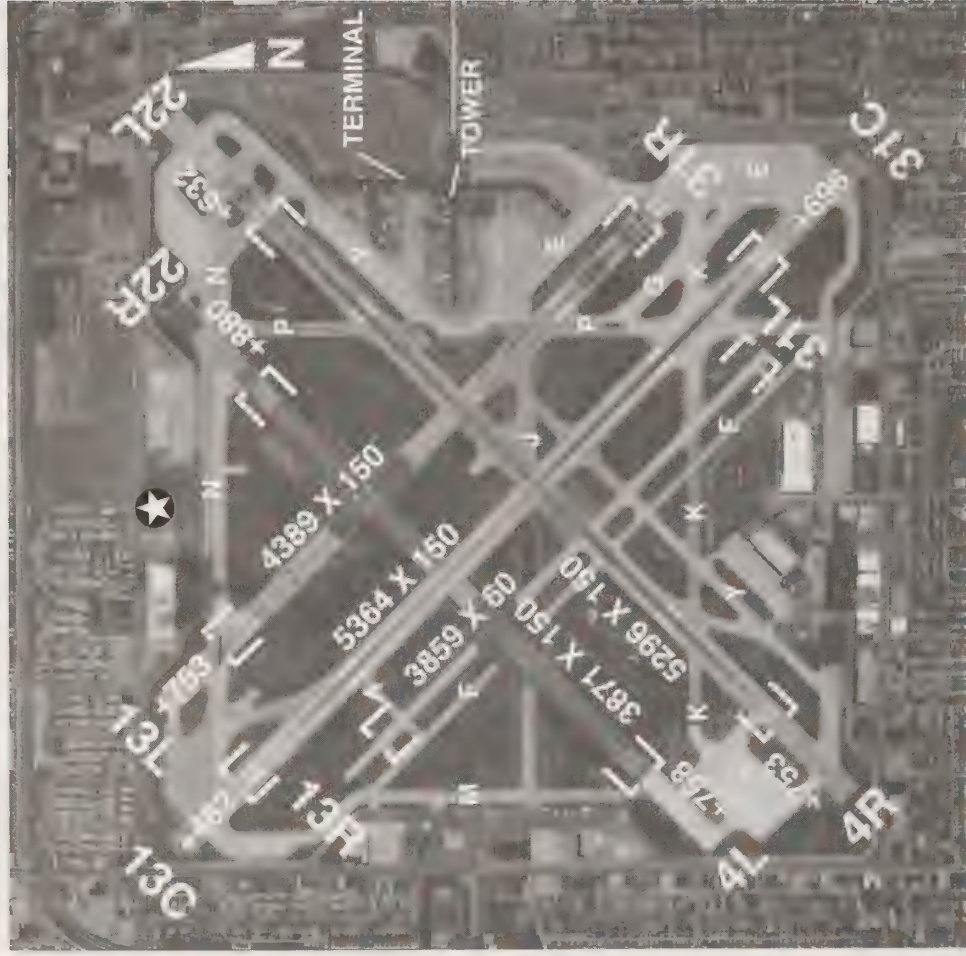
ELEV: 593'
 LAT: 41°51.53'
 LON: 87°36.48'
 VOR: 113.9 ORD
 118° 15.4 NM
 AWOS:

Services

FUEL: 100LL,,Jet A
 FBO:
 Signature Flight Support
 312-922-5454

Airport Manager: Ed Malinowski - 312-744-4787

Check A/FD for wind limitations and hours of operation.

**Communication**

TWR/CTAF: 118.7
 GND CON: 121.7
 ATIS: 132.75
 UNICOM: 122.95
 APP/DEP:CHI 118.4
 RCO:
 LIGHTS: TWR CNTRL

Navigation

ELEV: 620'
 LAT: 41°47.16'
 LON: 87°45.15'
 VOR: 114.2 CGT
 332°
 AWOS:

Services

FUEL: 100LL, Jet A
 FBO:Aero Services
 312-582-5720
 Million Air 312-284-2867
 Monarch Air Service
 312-471-4530
 Signature Aviation
 312-767-4400

Airport Manager: Charles Meyer - 312-767-0500 or 312-838-0627
 Midway radar 119.45

**Communication**

TWR/CTAF: *
 GND CON: **
 ATIS: 135.4
 UNICOM: 122.95
 APP/DEP: Check A/FD
 RCO:
 LIGHTS: TWR CNTRL

Navigation

ELEV: 668'
 LAT: 41°58.78'
 LON: 87°54.27'
 VOR: 113.9 ORD
 On Field
 AWOS:

Services

FUEL: 100LL, Jet A
 FBO:
 Signature Flight Support
 312-686-7000

Airport Manager: Hugh Murphy - 312-686-2200

*TWR/CTAF: 126.9N/120.75S **GND CON: 121.75 out/121.9 in

**Communication**

TWR/CTAF: 122.9
 GND CON:
 ATIS:
 UNICOM:
 APP/DEP:STL 123.7
 RCO:
 LIGHTS:

Navigation

ELEV: 420'
 LAT: 38°27.1'
 LON: 90°14.2'
 VOR: 116.8 TOY
 219°
 AWOS:

Services

FUEL: 100LL
 FBO:

Airport Manager: Earl Doerr - 618-281-9947 Attended irregularly

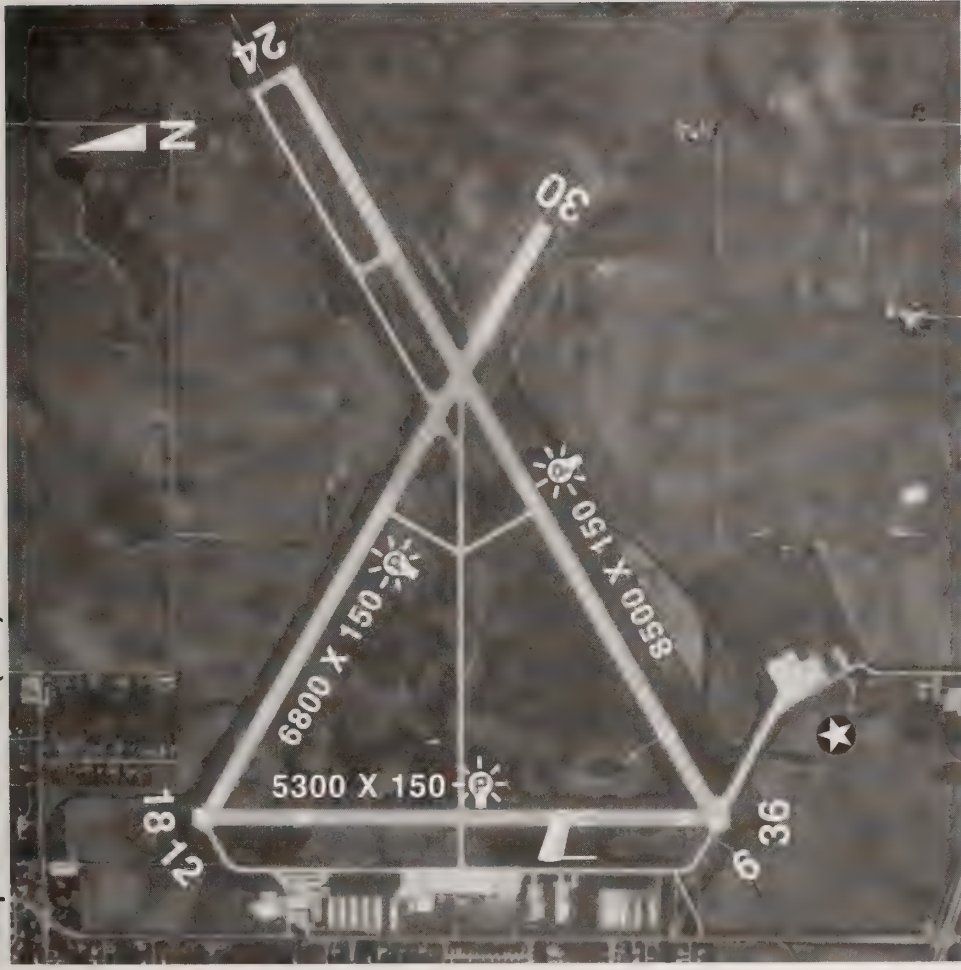


Communication
 TWR/CTAF: 123.0
 GND CON:
 ATIS:
 UNICOM:
 APP/DEP:
 RCO:
 LIGHTS:

Navigation
 ELEV: 769'
 LAT: 41°45.75'
 LON: 89°06.09'
 VOR: 111.2 PLL
 120° 22 NM
 AWOS:

Services
 FUEL:
 FBO: Bresson Flying Service
 815-628-7111

Airport Manager: Mark Bresson - 815-628-7111
 For lights phone 815-628-7111/7431

**Communication**

TWR/CTAF: 118.9
 GND CON: 121.75
 ATIS: 126.35
 UNICOM: 122.95
 APP/DEP:CMI 132.85
 RCO:STL 122.3
 LIGHTS: 118.9

Navigation

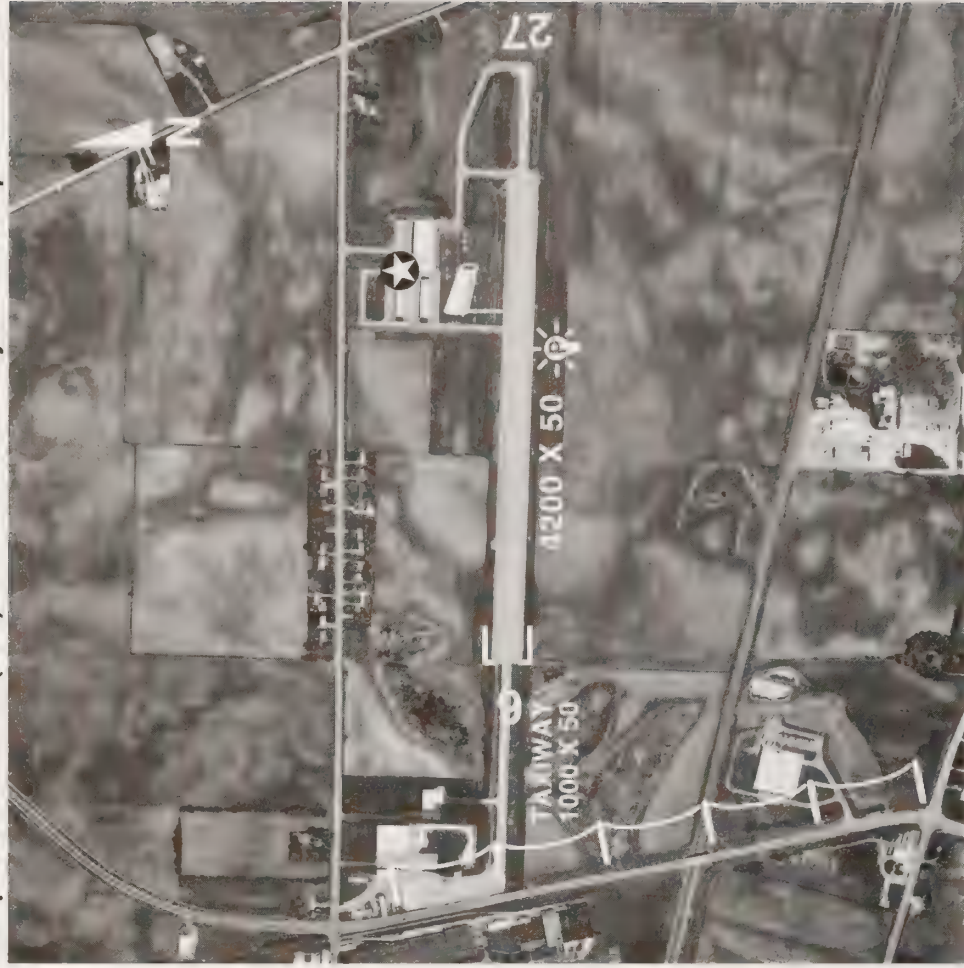
ELEV: 682'
 LAT: 39°50.08'
 LON: 88°51.98'
 VOR: 117.2 DEC
 353° 5.8 NM
 AWOS:

Services

FUEL: 100LL,JetA
 FBO:
 Decatur Aviation
 217-428-9832
 Slaybaugh Aviation
 217-422-1341

Airport Manager: Robert Krasicki - 217-428-2423

Treat approaches to Runway 12 & 18 as noise sensitive areas.

**Communication**

TWR/CTAF: 122.7
 GND CON: 122.7
 ATIS: 122.7
 UNICOM: 122.7
 APP/DEP: CHI 133.5
 RCO:
 LIGHTS: 122.7

Navigation

ELEV: 911'
 LAT: 41°55.79'
 LON: 88°42.81'
 VOR: 108.4 DPA
 276° 16.5 NM
 AWOS:

Services

FUEL: 100LL, Jet A
 FBO:
 R&M Aviation
 815-756-3232

Airport Manager: Rod Carey - 815-756-3232
 NDB on field - 209 (DKB)



Communication

TWR/CTAF: 123.05
 GND CON: 123.05
 ATIS: 123.05
 UNICOM: 126.0
 APP/DEP:RFD 126.0
 RCO:
 LIGHTS: 123.05

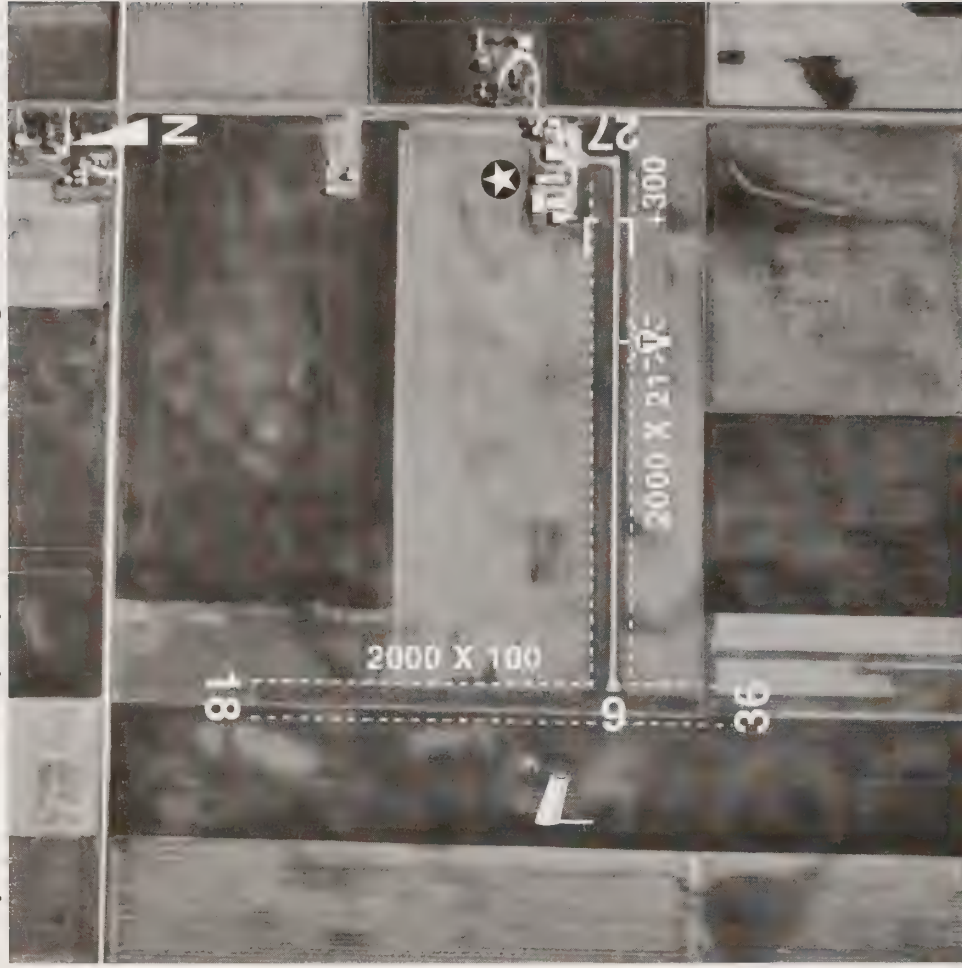
Navigation

ELEV: 785'
 LAT: 41°50.02
 LON: 89°26.77'
 VOR: 111.2 PLL
 153° 8.7 NM
 AWOS:

Services

FUEL: 100LL,Jet A
 FBO:
 Blackhawk Air Service
 815-288-2231
 M&M Aviation
 815-284-8359

Airport Manager: Larry Haley - 815-288-4095

**Communication**

TWR/CTAF: 122.8
 GND CON:
 ATIS:
 UNICOM: 122.8
 APP/DEP:CHI 123.75
 RCO:
 LIGHTS:

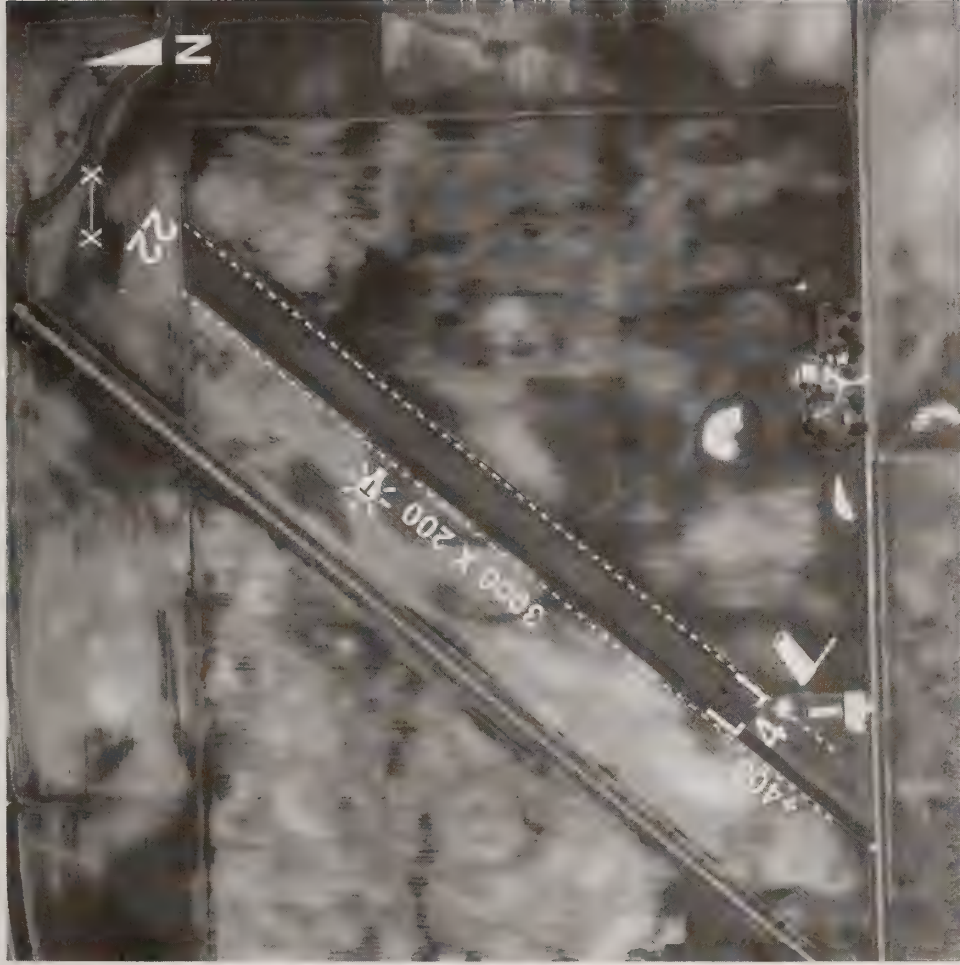
Navigation

ELEV: 632'
 LAT: 41°08.00'
 LON: 88°26.45'
 VOR: 109.6 PNT
 032° 23 NM
 AWOS:

Services

FUEL: 100LL
 FBO:
 Dwight Aero Service
 815-584-2486

Airport Manager: David Constantine - 815-584-2486
 NDB on field - 344 (DTG)

**Communication**

TWR/CTAF: 122.9
 GND CON:
 ATIS:
 UNICOM:
 APP/DEP:
 RCO:
 LIGHTS:

Navigation

ELEV: 690'
 LAT: 41°34.02'
 LON: 88°56.87'
 VOR: 112.3 JOT
 270° 28NM
 AWOS:

Services

FUEL:
 FBO:

Airport Manager: Lyle Younglove - 815-246-9870
 LIRL on SE side of runway only



Communication
 TWR/CTAF: 122.9
 GND CON:
 ATIS:
 UNICOM:
 APP/DEP:
 RCO:
 LIGHTS:

Navigation
 ELEV: 575'
 LAT: 41°30.95'
 LON: 90°22.78'
 VOR: 113.8 CVA
 154° 12 NM
 AWOS:

Services
 FUEL:
 FBO:

Airport Manager: Attended irregular hours. Check A/FD and NOTAMS for further operational details.



Communication

TWR/CTAF: 122.8
 GND CON:
 ATIS:
 UNICOM: 122.8
 APP/DEP:MKC 127.7
 RCO:
 LIGHTS: 122.8

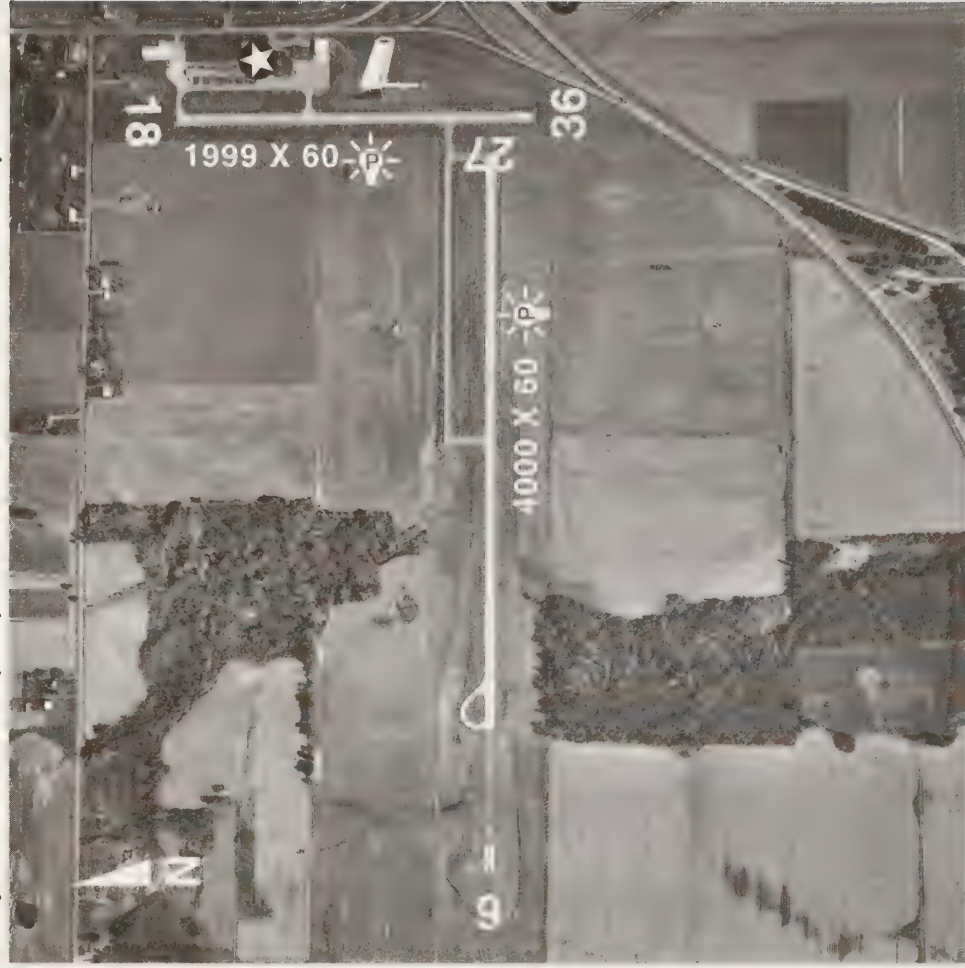
Navigation

ELEV: 585'
 LAT: 39°04.21'
 LON: 88°31.98'
 VOR: 109.0 BIB
 342° 9.3 NM
 AWOS: 118.375
 217-536-5976

Services

FUEL: 100LL,Jet A
 FBO:
 Tates Flying Service
 217-536-5312

Airport Manager: Leon Tate - 217-536-5312



Communication

TWR/CTAF: 122.9
 GND CON:
 ATIS:
 UNICOM:
 APP/DEP:MKC 127.7
 RCO:
 LIGHTS: 122.9

Navigation

ELEV: 436'
 LAT: 38°22.72'
 LON: 88°24.76'
 VOR: 116.6 SAM
 245°
 AWOS:

FUEL: 100LL,Jet A
 FBO:
 Contact Airport
 Manager

Services

Airport Manager: George Bone - 618-842-9587
 NDB on field - 257 (FWC)



Communication

TWR/CTAF: 122.7
 GND CON:
 ATIS:
 UNICOM: 122.7
 APP/DEP:MKC 127.7
 RCO:
 LIGHTS: 122.7

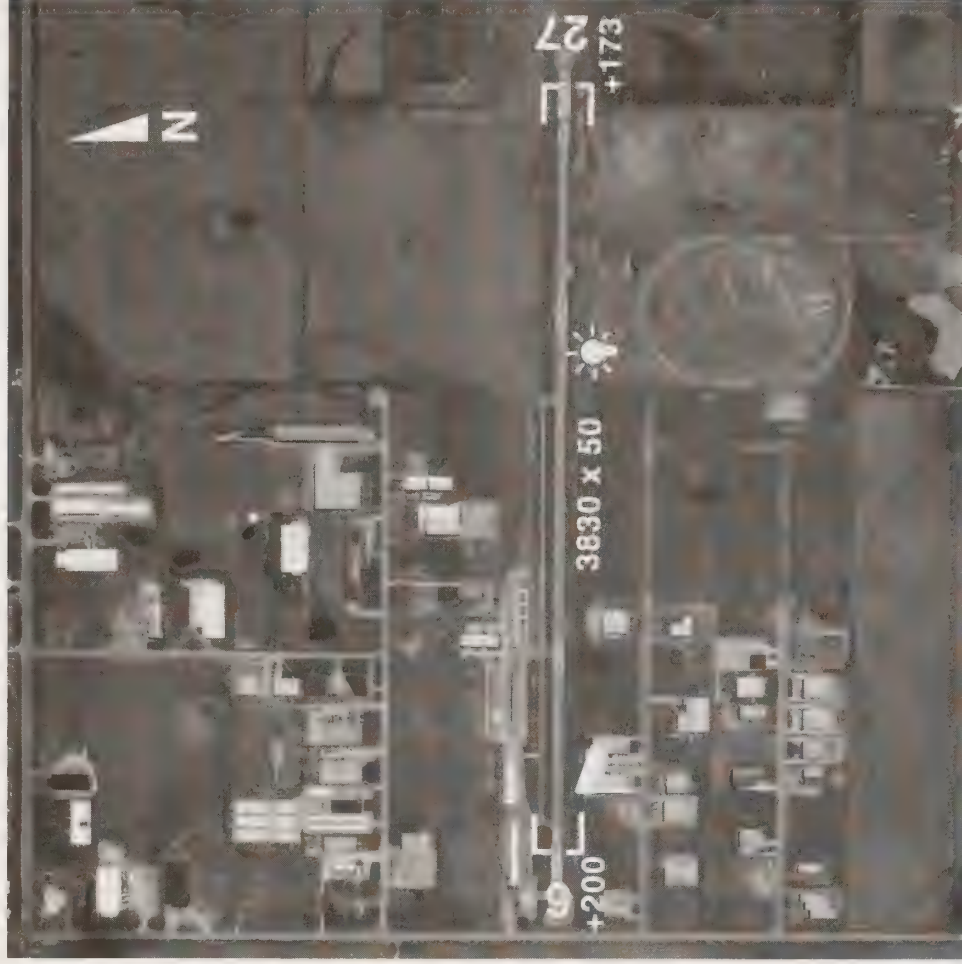
Navigation

ELEV: 472'
 LAT: 38°39.95'
 LON: 88°27.15'
 VOR: 109.0 BIB
 172°
 AWOS:

Services

FUEL: MOGAS
 FBO:
 Contact Airport
 Manager

Airport Manager: Warren Webster - 618-662-2823
 NDB on field - 353 (FOA)

**Communication**

TWR/CTAF: 122.8
 GND CON:
 ATIS:
 UNICOM: 122.8
 APP/DEP:CHI 133.1
 RCO:
 LIGHTS:

Navigation

ELEV: 778'
 LAT: 41°28.65'
 LON: 87°50.43'
 VOR: 114.2 CGT
 259°
 AWOS: 12.3 NM

Services

FUEL: 100LL
 FBO:
 South Suburban
 Aviation
 815-469-2311

Airport Manager: Phil Austin - 815-469-2311



Communication

TWR/CTAF: 122.8
 GND CON:
 ATIS:
 UNICOM: 122.8
 APP/DEP:RFD 126.0
 RCO:
 LIGHTS: 122.8

Navigation

ELEV: 856'
 LAT: 42°14.80'
 LON: 89°34.91'
 VOR: 110.8 RFD
 273° 17 NM
 AWOS:

Services

FUEL: 100LL,JetA
 FBO:
 MJT Flight Support
 815-232-1078

Airport Manager: Steve Kopko - 815-232-1078
 NDB on field - 335 (FEP)



Communication

TWR/CTAF: 122.8
 GND CON:
 ATIS:
 UNICOM:
 APP/DEP:
 RCO:
 LIGHTS:

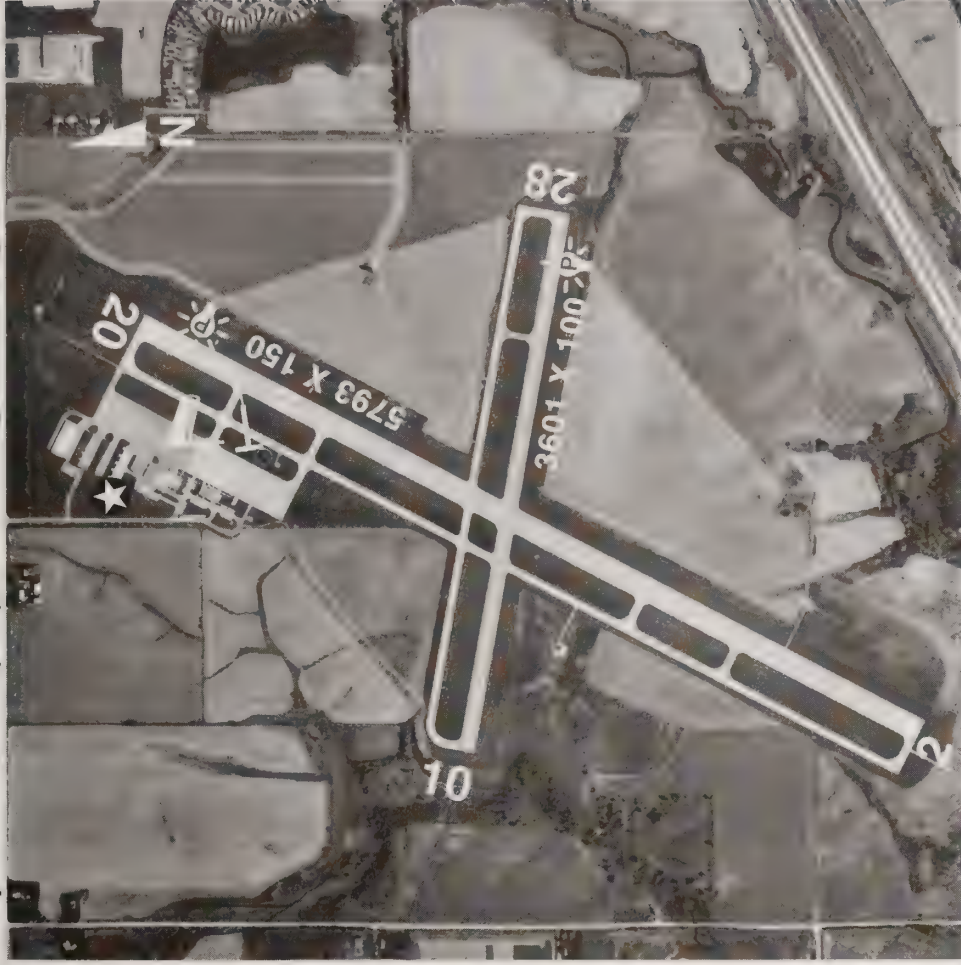
Navigation

ELEV: 949'
 LAT: 42°22.67'
 LON: 89°33.84'
 VOR: 110.8 RFD
 298° 19 NM
 AWOS:

Services

FUEL: 80,100LL
 FBO:
 Dornink Flying Service
 815-449-2239

Airport Manager: Ronald Dornink - 815-449-2239
 Attended irregularly



Communication

TWR/CTAF: 123.0
 GND CON:
 ATIS:
 UNICOM: 123.0
 APP/DEP:MLI 118.2
 RCO:122.1R 109.8T*
 LIGHTS: 123.0

Navigation

ELEV: 764'
 LAT: 40°56.28'
 LON: 90°25.87'
 VOR: 109.8 GBG
 On Field
 AWOS: 109.8
 309-343-3711

Services

FUEL: 100LL,Jet A
 FBO:
 Jet Air Inc.
 309-342-3134

Airport Manager: Harrell W. Timmons - 309-342-3134

*RCO is IKK FSS

**Communication**

TWR/CTAF: 122.9
 GND CON:
 ATIS:
 UNICOM:
 APP/DEP:
 RCO:
 LIGHTS:

Navigation

ELEV: 645'
 LAT: 42°26.39'
 LON: 90°06.61'
 VOR: 114.4 MZV
 065°
 AWOS:

Services

FUEL:
 FBO:

Airport Manager: Kent Johnson - 309-944-8128



Communication

TWR/CTAF: 122.8
 GND CON:
 ATIS:
 UNICOM: 122.8
 APP/DEP:CMI 121.35
 RCO:
 LIGHTS:

Navigation

ELEV: 758'
 LAT: 40°29.15'
 LON: 88°16.04'
 VOR: 116.8 RBS
 217° 7.4 NM
 AWOS:

Services

FUEL: 100LL,
 MOGAS
 FBO:
 C.R.S. Flying Service
 217-749-2293

Airport Manager: Richard Schertz - 217-749-2293

When departing Runway 18 make left turn out before flying over town of Elliott.

**Communication**

TWR/CTAF: 122.7
 GND CON:
 ATIS:
 UNICOM: 122.7
 APP/DEP:CHI 120.55
 RCO:
 LIGHTS:

Navigation

ELEV: 788'
 LAT: 42°19.49'
 LON: 88°04.40'
 VOR: 113.0 OBK
 316° 8.1 NM
 AWOS:

Services

FUEL: 100LL
 FBO:
 Cardinal Aircraft
 Services, Inc.
 847-546-5150

Airport Manager: Jim Tahaney/Gary Campbell - 847-223-2200
 No touch and go landings permitted.
 Pavement conditions poor - both runways.



Communication

TWR/CTAF: 122.8
 GND CON:
 ATIS:
 UNICOM: 122.8
 APP/DEP:MKC 127.7
 RCO:
 LIGHTS: 122.8

Navigation

ELEV: 541'
 LAT: 38°50.17'
 LON: 89°22.70'
 VOR: 114.3 VLA
 209°
 AWOS:

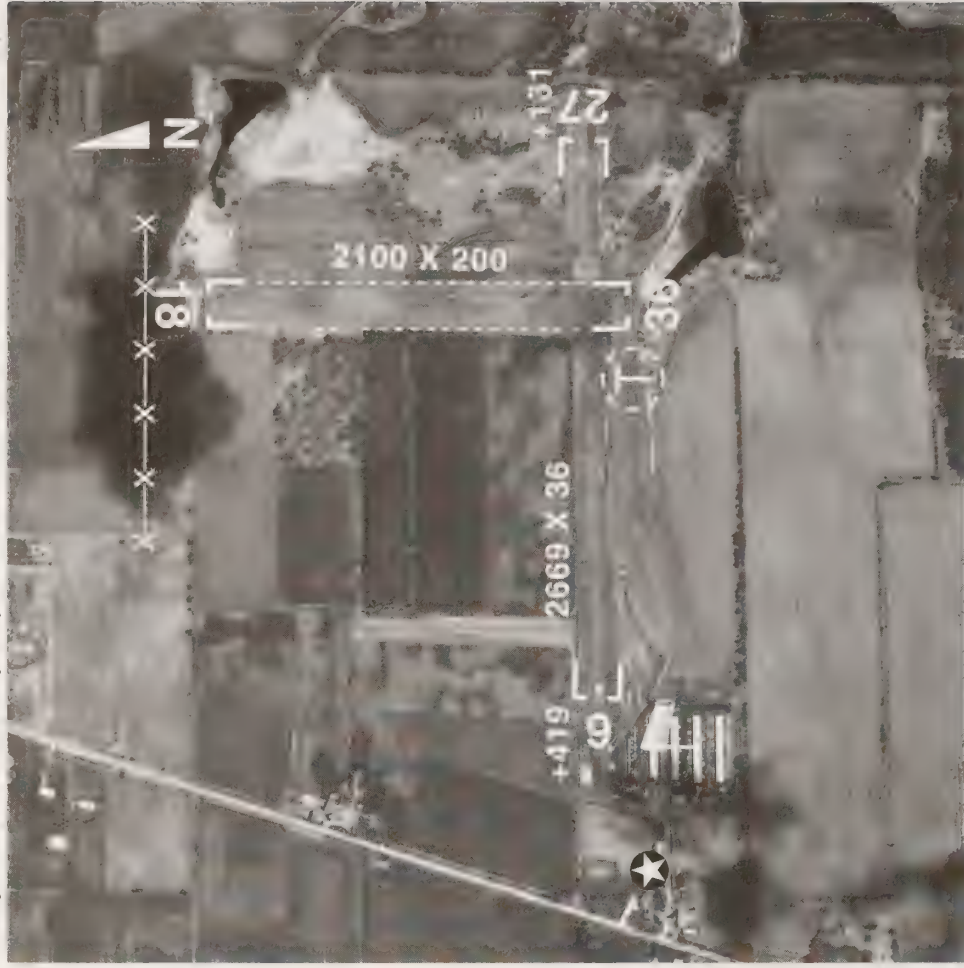
Services

FUEL:80,100LL,,JetA
 FBO:
 Skylane Aviation, Inc.
 618-664-1535

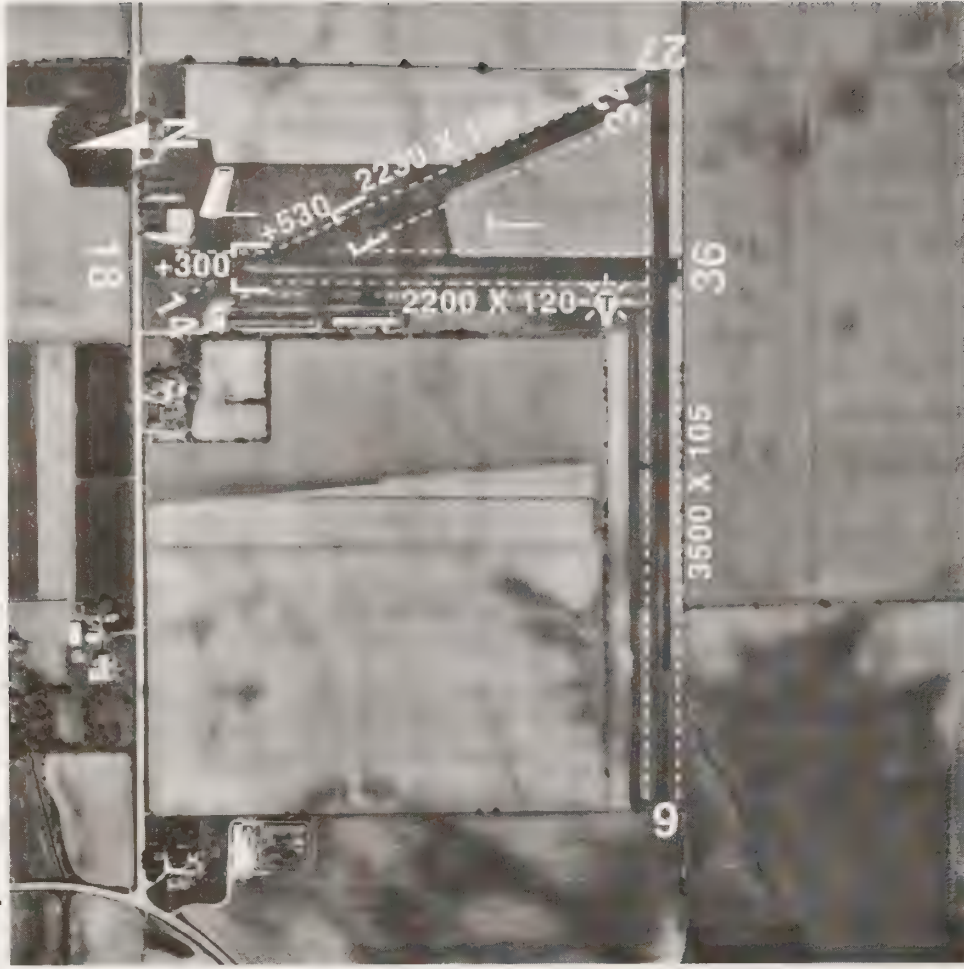
Airport Manager: Charles Bunting - 618-664-1535

NDB on field - 233 (GRE)

Caution: Parachute and ultralight operations



Communication		Navigation		Services	
TWR/CTAF:	122.8	ELEV:	875'	FUEL:	100LL
GND CON:		LAT:	42°24.16'	FBO:	Galt Flying Services
ATIS:		LON:	88°22.53'		815-648-2433
UNICOM:	122.8	VOR:	113.0 OBK		
APP/DEP:CHI	120.55	298°	21.7 NM		
RCO:		AWOS:			
LIGHTS:					
Airport Manager: Bob Russell - 815-648-2433					

**Communication**

TWR/CTAF: 122.9
 GND CON:
 ATIS:
 UNICOM:
 APP/DEP:
 RCO:
 LIGHTS:

Navigation

ELEV: 913'
 LAT: 42°24.25'
 LON: 88°38.01'
 VOR: 113.4 JVL
 108° 23.0 NM
 AWOS:

Services

FUEL: 80,100LL
 FBO:
 Dacy Air Services
 815-943-9876
 Phil Dacy
 815-943-5660

Airport Manager: John F. Dacy - 815-943-9876
 Lights phone 815-943-9876.



Communication		Navigation		Services	
TWR/CTAF:	122.9	ELEV:	499'	FUEL:	
GND CON:		LAT:	40°13.27'	FBO:	Miller Aviation
ATIS:		LON:	90°01.37'		309-543-2930
UNICOM:		VOR:	112.7 CAP		
APP/DEP:		316°	27 NM		
RCO:		AWOS:			
LIGHTS:	122.9				

Airport Manager: Bill Miller - 309-543-2930
 Drag strip two miles N.W - can be mistaken for airport



Communication

TWR/CTAF: 122.8
 GND CON:
 ATIS:
 UNICOM: 122.8
 APP/DEP:
 RCO:
 LIGHTS:

Navigation

ELEV: 537'
 LAT: 38°46.75'
 LON: 89°38.26'
 VOR: 116.0 TOY
 076°
 13 NM
 AWOS:

Services

FUEL:
 FBO:
 St. Louis Soaring
 618-654-3511

Airport Manager: Mike Brown - 618-654-3511-Transient aircraft discouraged.
 Extensive glider operations west side of runway. Gliders fly opposite pattern to powered aircraft. Powered aircraft traffic pattern east side of runway.



TWR/CTAF: 122.9

GND CON:

ATIS:

UNICOM:

APP/DEP:

RCO:

LIGHTS:

*

ELEV: 637'

LAT: 39°08.67'

LON: 88°27.42'

VOR: 114.3 VLA

279° 14.3 NM

AWOS:

FUEL:

FBO:

Communication

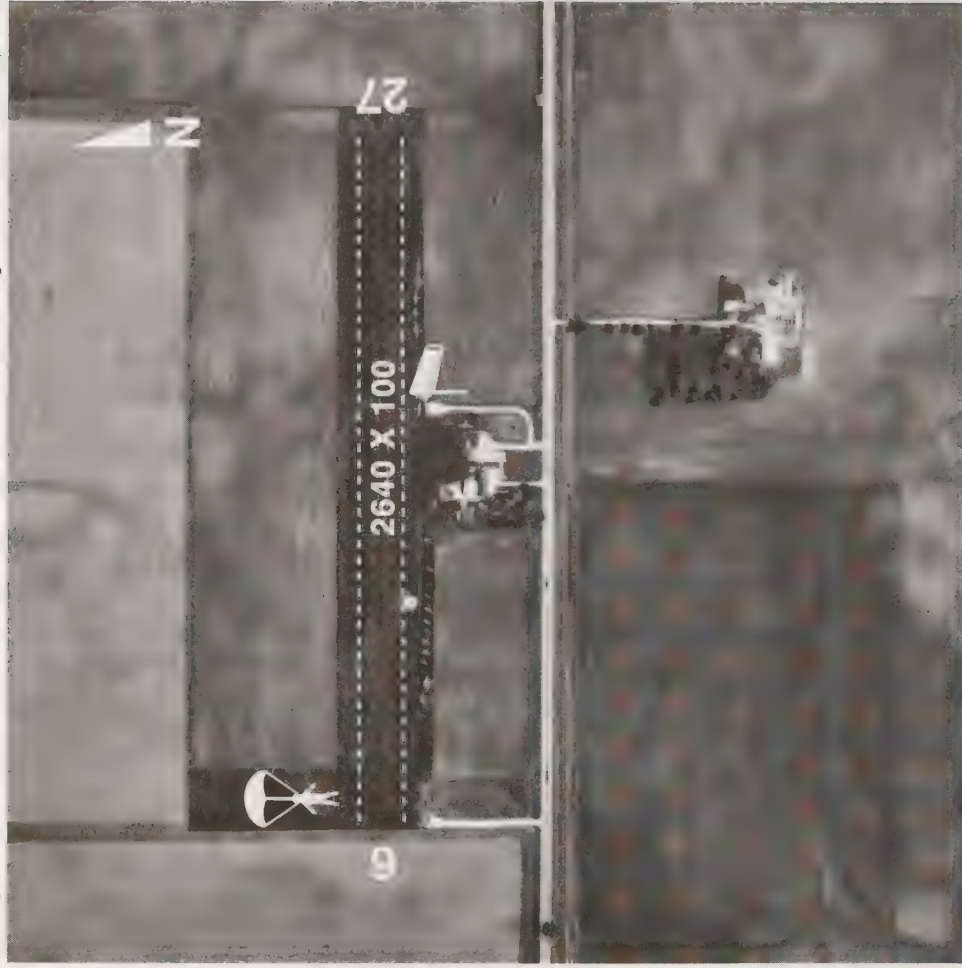
Navigation

Services

Airport Manager: John Booher - 217-532-6778 or 217-532-5566 - Airport unattended.

*Call 217-532-5566 for lights. 30' unmarked powerline approach end of RWY 18.

Maintain traffic pattern altitude on left downwind & base leg of RWY 36.



Communication

TWR/CTAF: 122.9
 GND CON:
 ATIS:
 UNICOM:
 APP/DEP:
 RCO:
 LIGHTS:

Navigation

ELEV: 760'
 LAT: 41°46.25'
 LON: 88°42.21'
 VOR: 108.4 DPA
 244°
 AWOS:

Services

FUEL: 80
 FBO:
 Hinckley Soaring
 815-286-7200

Airport Manager: Alan Abel - 847-888-2919

Caution-glider and parachute activity. 123.3 glider school frequency.



Communication

TWR/CTAF: 122.8
 GND CON:
 ATIS:
 UNICOM: 122.8
 APP/DEP:SPI 118.45*
 RCO:
 LIGHTS: 122.8

Navigation

ELEV: 624'
 LAT: 39°46.46'
 LON: 90°14.31'
 VOR: 108.6 IJX
 On Field
 AWOS:

Services

FUEL:80,100LL,JetA
 FBO:
 Starchief Aviation
 217-243-8597
 Klems Aero Repair
 217-245-2480
 Jacksonville Arpt Auth.
 217-243-5824

Airport Manager: Greg Hannig - 217-243-5824

*Frequency usable on the ground



Communication		Navigation		Services	
TWR/CTAF:	122.7	ELEV:	581'	FUEL:	80,100LL,JetA
GND CON:		LAT:	41°31.08'	FBO:	Joliet Park District
ATIS:		LON:	88°10.52'		815-741-7267
UNICOM:	122.7	VOR:	112.3 JOT		J.F. Aviation
APP/DEP:CHI	133.5		6.7 NM		815-744-7528
RCO:		AWOS:			
LIGHTS:	122.7				

Airport Manager: 815-741-7267

**Communication**

TWR/CTAF: 123.0
 GND CON:
 ATIS:
 UNICOM: 123.0
 APP/DEP:CHI 132.5*
 RCO:122.1R 111.6T
 LIGHTS: 123.0

Navigation

ELEV: 629'
 LAT: 41°04.28'
 LON: 87°50.78'
 VOR: 111.6 IKK
 ON FIELD
 113.2 EON
 190° 12.2 NM
 AWOS: 111.6

Services

FUEL: 100LL,JetA
 FBO:Kankakee Arprt
 Auth.815-939-3400
 Cooley Bros.
 815-939-4476
 Kankakee Air Transp.
 815-939-1245

Airport Manager: Alan Alexander - 815-939-1422

*Can be received on ground



Communication

TWR/CTAF: 122.8
 GND CON:
 ATIS:
 UNICOM: 122.8
 APP/DEP:
 RCO:
 LIGHTS:

Navigation

ELEV: 625'
 LAT: 41°06.00'
 LON: 87°55.00'
 VOR: 111.6 IKK
 295°
 AWOS:

Services

FUEL: 100LL
 FBO:
 Koerner Aviation, Inc.
 815-932-4222

Airport Manager: Marty & Roger Koerner - 815-932-4222



Communication

TWR/CTAF: 122.8
 GND CON:
 ATIS:
 UNICOM: 122.8
 APP/DEP:MLI 118.2
 RCO:
 LIGHTS: 122.8

Navigation

ELEV: 858'
 LAT: 41°12.31'
 LON: 89°57.83'
 VOR: 114.7 BDF
 279°
 AWOS:

Services

FUEL: 100LL
 FBO: Anderson Flying Service
 309-853-8222

Airport Manager: Dale Lindstrom - 309-853-8222
 NDB on field - 245 (EZI)



Communication

TWR/CTAF: 122.8
 GND CON:
 ATIS:
 UNICOM: 122.8
 APP/DEP:
 RCO:
 LIGHTS: 122.8

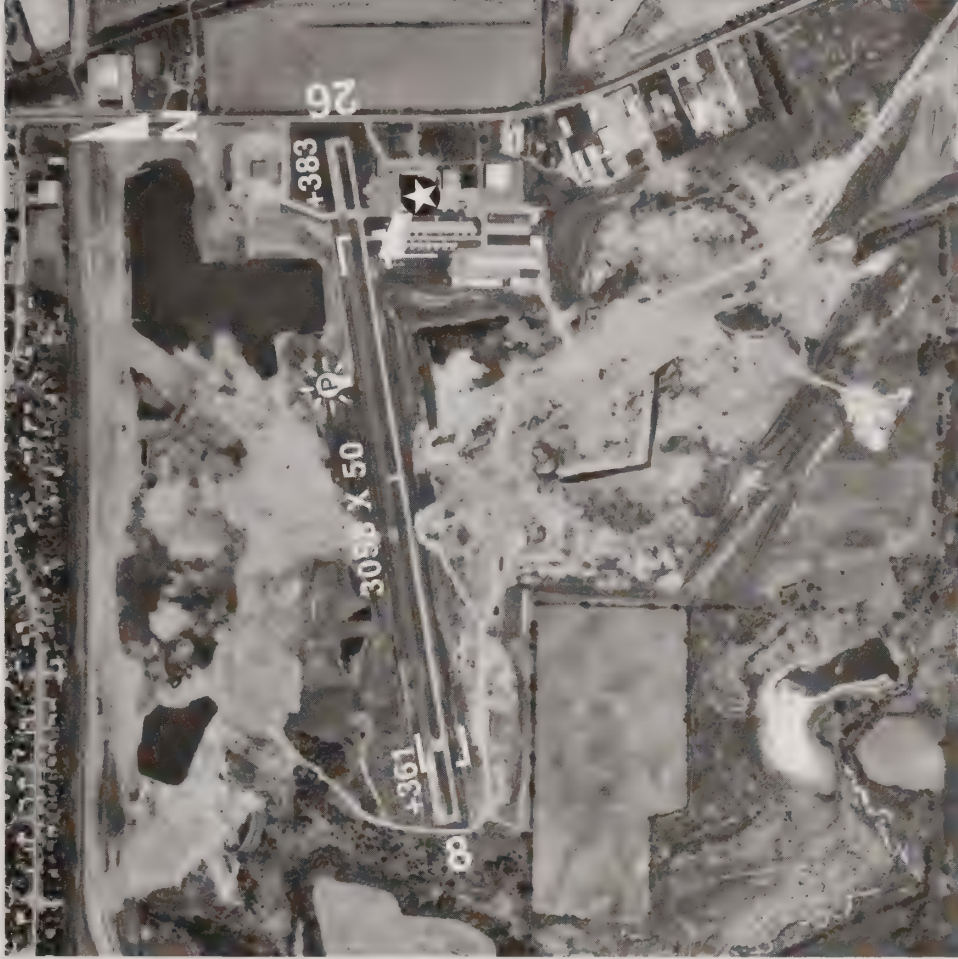
Navigation

ELEV: 568'
 LAT: 41°01.16'
 LON: 89°23.19'
 VOR: 114.7BDF
 133°
 AWOS:

FUEL: 80,100LL
 FBO:
 Lacon Aero Service
 309-246-3700

Services

Airport Manager: Neil Pobanz - 309-246-3700



Communication

TWR/CTAF: 122.8
 GND CON: 122.8
 ATIS: 122.8
 UNICOM: 120.55
 APP/DEP: CHI 120.55
 RCO:
 LIGHTS: 122.75

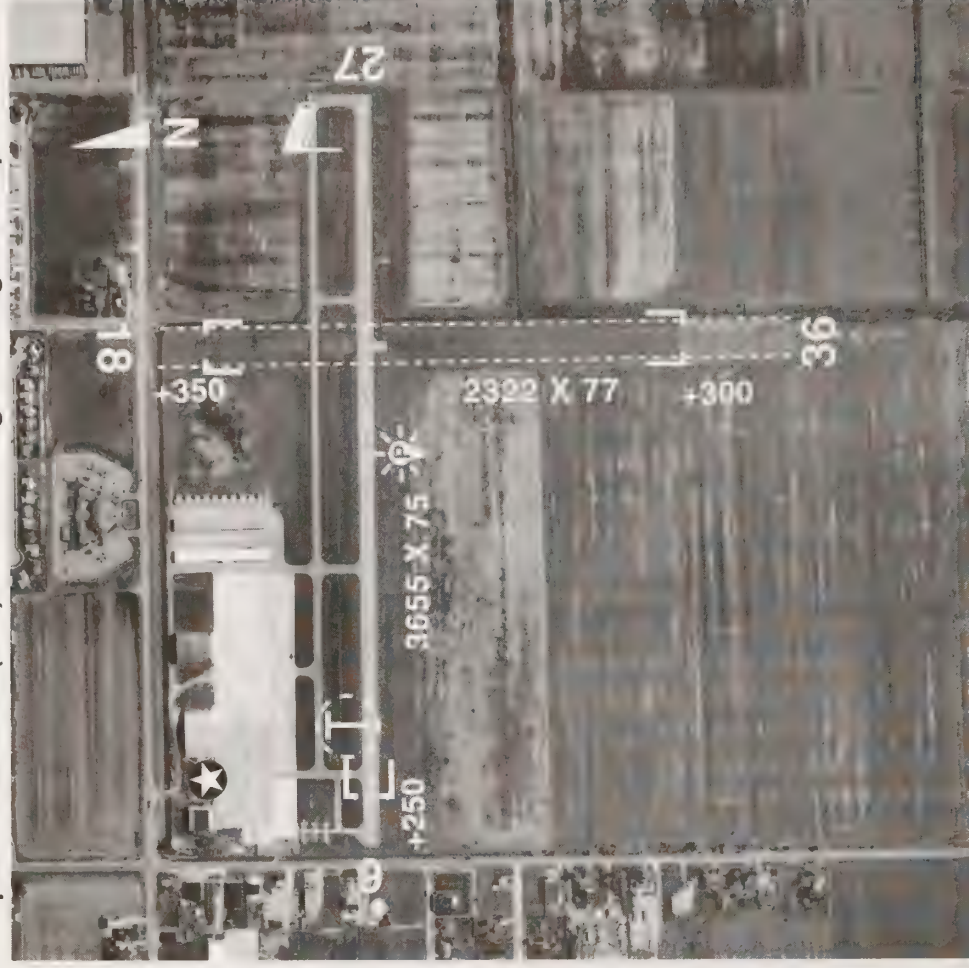
Navigation

ELEV: 886'
 LAT: 42°12.41'
 LON: 88°19.38'
 VOR: 113.0 OBK
 265°
 16.6 NM
 AWOS:

Services

FUEL: 100LL,JetA
 FBO:
 Finefield Aviation
 815-459-4858
 Northern Ill. Flight
 Center
 815-455-7707

Airport Manager: Howard Seedorf - 815-455-7707



Communication

TWR/CTAF: 122.7
 GND CON:
 ATIS:
 UNICOM:
 APP/DEP:CHI 118.4
 RCO:
 LIGHTS: 122.7

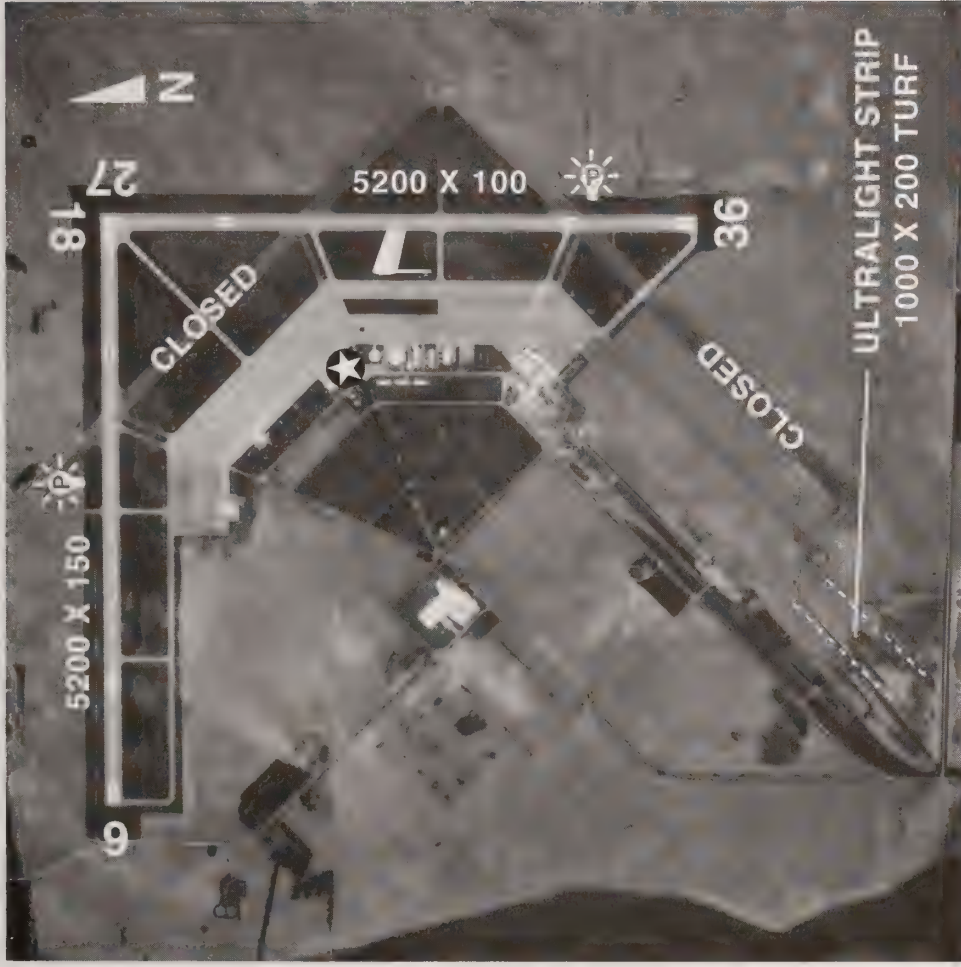
Navigation

ELEV: 616'
 LAT: 41°32.39'
 LON: 87°31.93'
 VOR: 114.2 CGT
 043° 2.5 NM
 AWOS: 119.275
 708-895-9526

Services

FUEL:80,100LL,JetA
 FBO:AMCORPFFit.Cen.
 708-895-2666
 Assoc. Air Activities
 708-474-6073
 Sun Aero-708-895-8958
 Northeast Aviation
 708-895-6535

Airport Manager: Robert Malkas - 708-895-8844



Communication

TWR/CTAF: 122.8
 GND CON:
 ATIS:
 UNICOM: 122.8
 APP/DEP:EW 125.6
 RCO:
 LIGHTS: 122.8

Navigation

ELEV: 430'
 LAT: 38°45.86'
 LON: 87°36.33'
 VOR: 113.5 LWV
 On Field
 AWOS: 118.00
 618-943-5252

Services

FUEL: 100LL,JetA
 FBO:
 Bi-State Authority
 618-943-5733
 Vieke Aviation
 618-943-5547

Airport Manager: Kurtis Schwartz - 618-943-5733

Glider activity sunrise-sunset. Runway 09-27 & Runway 18-36 has right hand traffic for glider aircraft.



Communication

TWR/CTAF: 122.9
 GND CON:
 ATIS:
 UNICOM:
 APP/DEP:
 RCO:
 LIGHTS:

Navigation

ELEV: 910'
 LAT: 42°05.84'
 LON: 89°25.16'
 VOR: 111.2 PLL
 027° 9 NM
 AWOS:

Services

FUEL:
 FBO:
 The Air Master
 815-738-2977

Airport Manager: Nick Lung - 815-738-2894

**Communication**

TWR/CTAF: 122.9
 GND CON:
 ATIS:
 UNICOM:
 APP/DEP:
 RCO:
 LIGHTS:

Navigation

ELEV: 680'
 LAT: 41°36.00'
 LON: 88°46.77'
 VOR: 108.4 DPA
 226°
 AWOS:

Services

FUEL:
 FBO:
 Harold's Flying Service
 815-495-2821

Airport Manager: Harold F. Miller - 815-495-2821



Communication

TWR/CTAF: 122.8
 GND CON: 122.8
 ATIS: 122.8
 UNICOM: 126.15
 APP/DEP:SPI 126.15
 RCO:
 LIGHTS: 122.8

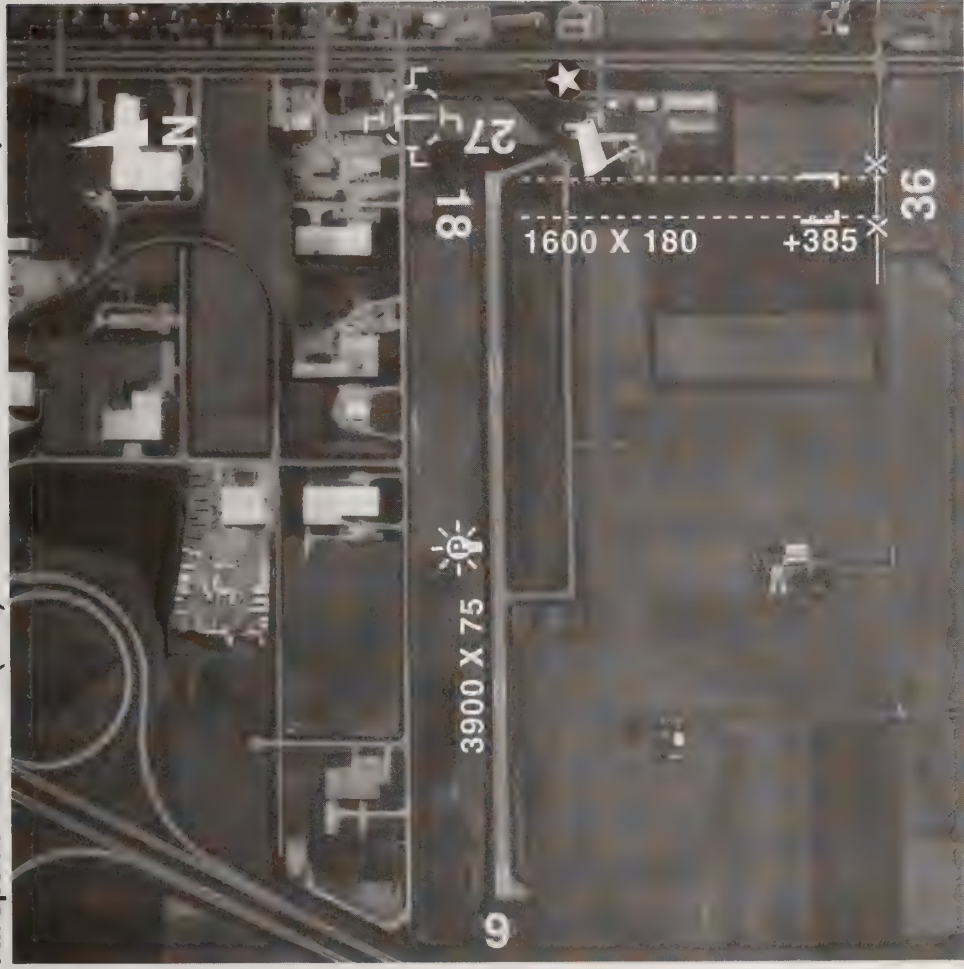
Navigation

ELEV: 597'
 LAT: 40°09.51'
 LON: 89°20.10'
 VOR: 112.7 CAP
 036° 20.8 NM
 AWOS: 329
 217-732-9605

Services

FUEL: 100LL
 MOGAS
 FBO:
 Heritage In Flight
 217-732-3333

Airport Manager: Heritage in Flight - 217-732-3333
 NDB on field - 329 (AAA)



Communication

TWR/CTAF: 122.8
 GND CON:
 ATIS:
 UNICOM: 122.8
 APP/DEP:STL 124.2
 RCO:
 LIGHTS: 122.8

Navigation

ELEV: 690'
 LAT: 39°09.98'
 LON: 89°40.49'
 VOR: 114.3 VLA
 276° 24.3 NM
 AWOS:

Services

FUEL: 100LL
 FBO:
 J-MAR Aero Service
 217-324-6444

Airport Manager: Kenneth W. Degg - 217-324-4723 Caution: Aerobatic area
 2000ft-3500ft-MSL above airport. Check NOTAMS for activation. Extensive Ag
 operations summer months. NDB on field - 371 (LTD)

**Communication**

TWR/CTAF: 122.7
 GND CON:
 ATIS:
 UNICOM: 122.7
 APP/DEP:
 RCO:
 LIGHTS: 122.7

Navigation

ELEV: 733'
 LAT: 41°10.77'
 LON: 89°08.87'
 VOR: 114.7 BDF
 087°
 AWOS:

Services

FUEL: 80, 100LL
 FBO:
 H.E.L. Aviation
 815-882-2371

Airport Manager: Milton Hartenbower - 815-882-2371



Communication

TWR/CTAF: 122.8
 GND CON:
 ATIS:
 UNICOM: 122.8
 APP/DEP:CHI 135.6
 RCO:IKK FSS 122.15
 LIGHTS: 122.8

Navigation

ELEV: 705'
 LAT: 40°31.22'
 LON: 90°39.15'
 VOR: 111.4 BRL
 129° 17.5 NM
 AWOS: 119.025
 309-837-4022

Services

FUEL: 100LL,JetA
 FBO:
 Cobb Aviation
 309-833-3324

Airport Manager: Lee Cobb - 309-833-3324

**Communication**

TWR/CTAF: 122.8
 GND CON:
 ATIS:
 UNICOM:
 APP/DEP:
 RCO:
 LIGHTS:

Navigation

ELEV: 702'
 LAT: 40°27.25'
 LON: 90°37.41'
 VOR: 111.4 BRL
 135°
 AWOS: 21 NM

Services

FUEL:
 FBO:
 Smith Aviation
 309-837-1022

Airport Manager: Roger A. Smith - 309-837-1022

**Communication**

TWR/CTAF: 122.8
 GND CON:
 ATIS:
 UNICOM:
 APP/DEP:PIA 119.95
 RCO:
 LIGHTS:

Navigation

ELEV: 501'
 LAT: 40°29.36'
 LON: 89°46.69'
 VOR: 115.2 PIA
 173° 11.5 NM
 AWOS:

Services

FUEL:
 FBO:

Airport Manager: Dave Mitchell - 309-545-2281

**Communication**

TWR/CTAF: 126.9
 GND CON: 121.7
 ATIS:
 UNICOM: 122.95
 APP/DEP:MKC 125.3
 RCO:122.1R* 110.4T*
 LIGHTS: 126.9

Navigation

ELEV: 472'
 LAT: 37°45.19'
 LON: 89°00.70'
 VOR: 110.4 MWA
 On Field
 AWOS:

Services

FUEL: 100LL,JetA
 FBO:
 Aeroelite, Inc.
 618-993-2764

Airport Manager: Charles Stoker - 618-993-2764

*RCO is COU FSS

**Communication**

TWR/CTAF: 122.7
 GND CON:
 ATIS:
 UNICOM: 122.7
 APP/DEP:CMI 132.85
 RCO: 123.6R 109.4T*
 LIGHTS: 122.7

Navigation

ELEV: 721'
 LAT: 39°28.68'
 LON: 88°16.81'
 VOR: 109.4 MTO
 On Field
 AWOS:
 217-234-8442

Services

FUEL: 100LL,JetA
 FBO:
 Central Illinois Air Corp.
 217-234-8146

Airport Manager: Jerry Carter-217-234-7120

*RCO is IKK FSS



Communication

TWR/CTAF: 122.8
 GND CON:
 ATIS:
 UNICOM: 122.8
 APP/DEP:
 RCO:
 LIGHTS: 122.8

Navigation

ELEV: 384'
 LAT: 37°11.15'
 LON: 88°45.04'
 VOR: 113.1 CNG
 018°
 AWOS: 11.4 NM

Services

FUEL: 100LL
 FBO:
 Jerry's Aero Service
 618-524-2440

Airport Manager: Jerry Caudle - 618-524-2440
 NDB on field - 281 (MIX) for VFR use only



Communication

TWR/CTAF: 119.4
 GND CON: 121.9
 ATIS: 121.2
 UNICOM: 122.95
 APP/DEP: MLI 118.2
 RCO:IKK FSS 122.60
 LIGHTS: 119.4

Navigation

ELEV: 589'
 LAT: 41°26.92'
 LON: 90°30.45'
 VOR: 114.4 MZV
 033° 9.7 NM
 AWOS: 309-799-7096

Services

FUEL: 100LL,JetA
 FBO: Elliott Flying Service
 309-799-3183

Airport Manager: Kent G. George - 309-757-1725

**Communication**

TWR/CTAF: 122.9
 GND CON:
 ATIS:
 UNICOM:
 APP/DEP:
 RCO:
 LIGHTS:

Navigation

ELEV: 560'
 LAT: 41°27.60'
 LON: 90°29.57'
 VOR:
 AWOS:

Services

FUEL: 100LL
 FBO:
 Quad City Seaplane
 Service
 309-799-3251

Airport Manager: Jim Goetsch - 1-800-678-9747
 Operations approved by MLI Tower 119.4.



Communication
 TWR/CTAF: 123.0
 GND CON:
 ATIS:
 UNICOM: 123.0
 APP/DEP:CHI 132.5
 RCO:
 LIGHTS:

Navigation
 ELEV: 790'
 LAT: 41°22.65'
 LON: 87°40.88'
 VOR: 113.2 EON
 036° 8.2 NM
 AWOS:

Services
 FUEL: 100LL
 FBO:
 Paul Sanger
 708-534-8282

Airport Manager: Paul Sanger - 708-534-8282

Noise sensitive area 3/4 mile SW when departing Runway 23



Communication
 TWR/CTAF: 122.8
 GND CON:
 ATIS:
 UNICOM: 122.8
 APP/DEP: MLI 118.2
 RCO:
 LIGHTS: 122.8

Navigation
 ELEV: 753'
 LAT: 40°55.78'
 LON: 90°37.87'
 VOR: 109.8 GBG
 264°
 AWOS:

Services
 FUEL: 100LL
 MOGAS
 FBO:
 Phil Kuhnkey &
 Aletha Munson
 309-734-3411

Airport Manager: Bill Dowell - 309-734-4026



Communication

TWR/CTAF: 122.8
 GND CON:
 ATIS:
 UNICOM: 122.8
 APP/DEP:CHI 133.5
 RCO:IKK FSS 122.5
 LIGHTS: 122.8

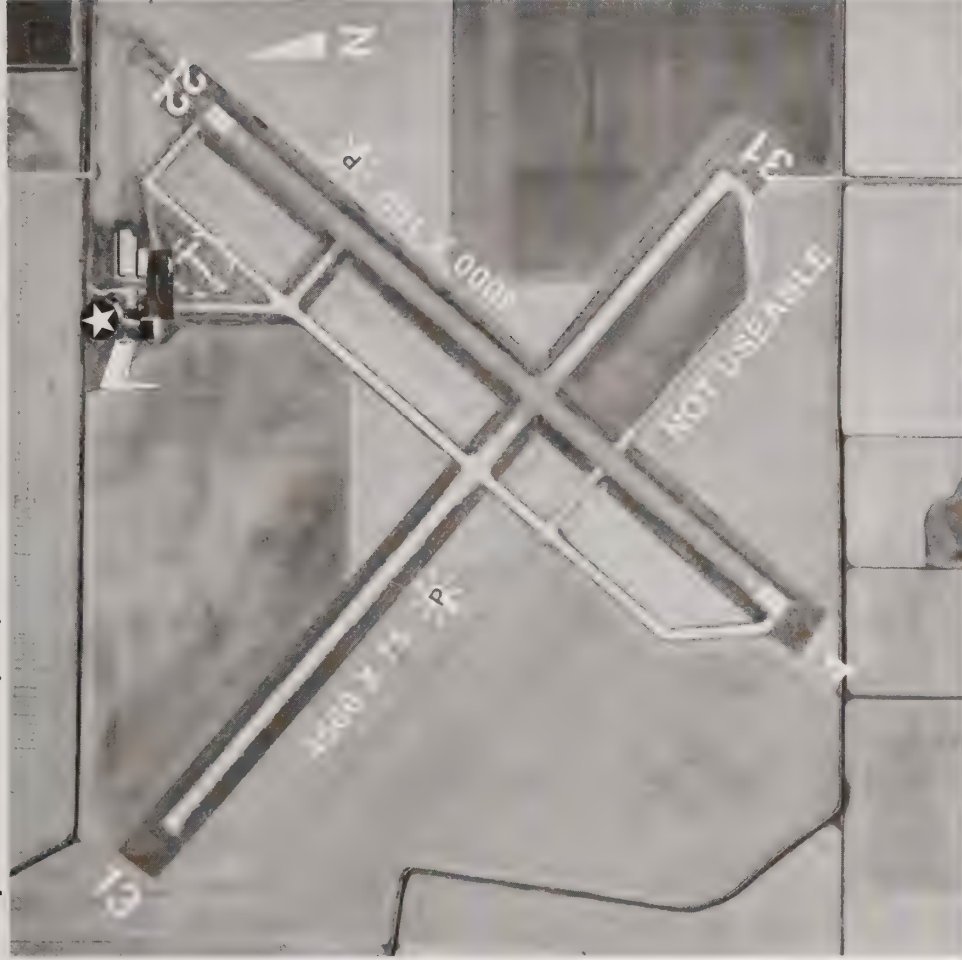
Navigation

ELEV: 584'
 LAT: 41°25.53'
 LON: 88°25.12'
 VOR: 112.3 JOT
 210° 8.6 NM
 AWOS:

Services

FUEL: 80,100LL
 FBO: Littlefield Aeroplane
 815-941-0063

Airport Manager: Sid Nelson - 815-941-1600



Communication

TWR/CTAF: 122.7
 GND CON:
 ATIS:
 UNICOM: 122.7
 APP/DEP:EW 125.6
 RCO:
 LIGHTS: 122.7

Navigation

ELEV: 429'
 LAT: 38°36.39'
 LON: 87°43.60'
 VOR: 113.5 LWV
 213°
 AWOS:

Services

FUEL: 100LL
 FBO:
 Trainair, Inc.
 618-948-2613

Airport Manager: Ken Wood - 618-948-2413
 NDB on field - 524 (AJG)



Communication		TWR/CTAF: 122.9	ELEV: 929'	Services		FUEL:
GND CON:			LAT: 42°02.24'			FBO:
ATIS:			LON: 89°23.57'			
UNICOM:			VOR: 112.2 PLL			
APP/DEP:			052°			
RCO:			7.5 NM			
LIGHTS: 122.9			AWOS:			

Airport Manager: Marty Nelson - 815-734-6242



Communication		Navigation		Services	
TWR/CTAF:	122.8	ELEV:	732'	FUEL:	100LL, JET A
GND CON:		LAT:	39°59.25'	FBO:	CONTACT AIRPORT MANAGER
ATIS:		LON:	90°48.25'		
UNICOM:	122.8	VOR:	113.6 UIN		
APP/DEP:MKC135.525		AWOS:	23.5 NM		
RCO:					
LIGHTS:	122.8				
Airport Manager: Patrick Tracy - 217-773-3118					



Communication

TWR/CTAF: 123.0
 GND CON:
 ATIS:
 UNICOM: 123.0
 APP/DEP:MKC 127.7
 RCO:122.05R 113.8T*
 LIGHTS: 123.0

Navigation

ELEV: 480'
 LAT: 38°19.40'
 LON: 88°51.51'
 VOR: 113.8 VNM
 224° 3.4 NM
 AWOS: 113.8
 618-242-7933

Services

FUEL: 100LL,JetA
 FBO:
 Flightline Aero
 Services
 618-244-7746

Airport Manager: Vincent Waters - 618-242-7016

Noise abatement: SW departures on Runway 23 make left turnout

*RCO is IKK FSS



Communication

TWR/CTAF: 122.7
 GND CON:
 ATIS:
 UNICOM: 122.7
 APP/DEP:
 RCO:CMI
 LIGHTS: 122.7

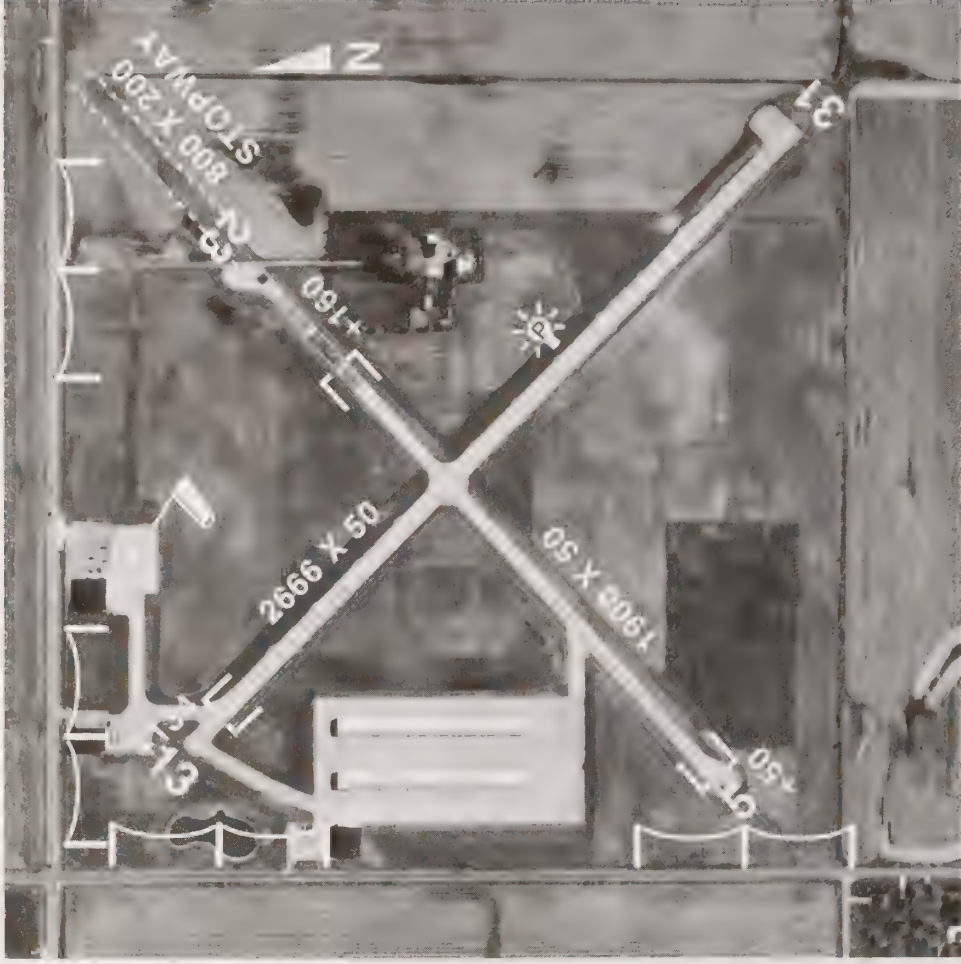
Navigation

ELEV: 640'
 LAT: 41°31.17'
 LON: 88°36.34'
 VOR: 112.3 JOT
 261°
 AWOS:

Services

FUEL: 100LL
 MOGAS
 FBO:
 VanReeth Aviation
 815-695-9500

Airport Manager: C.W. Cushing - 815-695-9411



Communication

TWR/CTAF: 123.0
 GND CON:
 ATIS:
 UNICOM:
 APP/DEP: CHI 118.4
 RCO:IKK FSS 122.5
 LIGHTS: 123.5

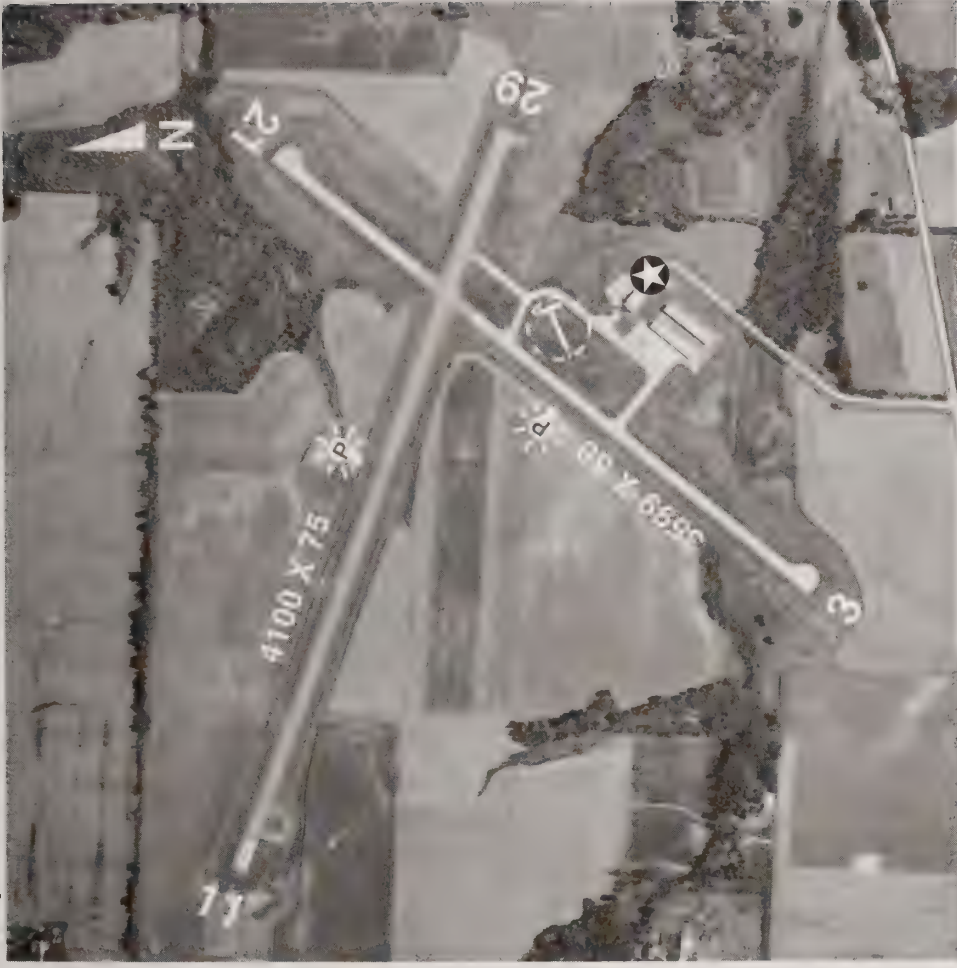
Navigation

ELEV: 753'
 LAT: 41°28.79'
 LON: 87°55.29'
 VOR: 113.2 EON
 333° 13.9 NM
 AWOS:

Services

FUEL: 80,100LL
 FBO:Howell Airport
 Corp-815-485-9803
 Curley's Aero Repair
 815-485-4005

Airport Manager: Bill Howell - 815-485-0577



Communication

TWR/CTAF: 123.0
 GND CON: 123.0
 ATIS:
 UNICOM: 123.0
 APP/DEP:MKC 127.7
 RCO:
 LIGHTS: 123.0

Navigation

ELEV: 482'
 LAT: 38°43.31'
 LON: 88°10.59'
 VOR: 116.6 SAM
 341° 14.8 NM
 AWOS: 272
 618-393-4416

Services

FUEL: 100LL,JetA
 FBO:
 Southeastern Illinois
 Aviation
 618-393-2967

Airport Manager: Tom Baker 618-393-2967
 NDB on field - 272 (OLY)



Communication		Navigation		Services	
TWR/CTAF:	122.7	ELEV:	618'	FUEL:	80,100LL
GND CON:		LAT:	41°21.89'	JetA	
ATIS:		LON:	88°51.56'	FBO:	Ottawa Flying Service
UNICOM:	122.7	VOR:	112.3 JOT		815-433-1800
APP/DEP:		244°	26.7 NM		
RCO:		AWOS:			
LIGHTS:					
Airport Manager: Roger Nelson - 815-433-6769 Parachute Jumping					



Communication
 TWR/CTAF: 122.9
 GND CON:
 ATIS:
 UNICOM:
 APP/DEP:
 RCO:
 LIGHTS: 122.9

Navigation
 ELEV: 663'
 LAT: 39°25.20'
 LON: 89°59.47'
 VOR: 108.6 IJX
 150° 24 NM
 AWOS:

Services
 FUEL:100LL
 MOGAS
 FBO:
 Zelmer Memorial
 Airpark, Inc.
 217-436-9003

Airport Manager: George "Bing" Ribble - 618-778-5752
 Attended irregularly



Communication		Navigation		Services	
TWR/CTAF:	123.0	ELEV:	654'	FUEL:	100LL
GND CON:		LAT:	39°42.01'	FBO:	Contact Airport Manager
ATIS:		LON:	87°40.24'		
UNICOM:	123.0	VOR:	115.3 TTH		
APP/DEP:HUF	125.45	301°	23.3 NM		
RCO:		AWOS:			
LIGHTS:	123.0				

Airport Manager: William Huffman - 217-465-8474
 NDB on field - 341 (PRG)



Communication

TWR/CTAF: 122.8
 GND CON:
 ATIS:
 UNICOM: 122.8
 APP/DEP: CMI 121.35
 RCO:
 LIGHTS:

Navigation

ELEV: 779'
 LAT: 40°26.94'
 LON: 88°07.67'
 VOR: 116.8 RBS
 166° 8.1 NM
 AWOS:

Services

FUEL: 100LL
 MOGAS
 FBO:
 Specchio Motors, Inc.
 217-379-2723

Airport Manager: Kevin Gosser - 217-379-4396
 Airport attended irregularly



Communication

TWR/CTAF: 122.8
 GND CON:
 ATIS:
 UNICOM: 122.8
 APP/DEP: PIA 119.95
 RCO:
 LIGHTS: 122.8

Navigation

ELEV: 530'
 LAT: 40°29.29'
 LON: 89°40.55'
 VOR: 115.2 PIA
 151° 12.7 NM
 AWOS:

Services

FUEL: 80,100LL
 FBO:
 Byerly Aviation, Inc.
 309-348-3692

Airport Manager: Jeffrey Cousins - 309-348-3692



Communication
 TWR/CTAF: 119.1
 GND CON: 121.6
 ATIS: 126.1
 UNICOM: 122.95
 APP/DEP:PIA 125.80
 RCO:IKK FSS 122.35
 LIGHTS: TWR CNTRLD

Navigation
 ELEV: 660'
 LAT: 40°39.86'
 LON: 89°41.60
 VOR: 115.2 PIA
 098° 4.6 NM
 AWOS:
 309-697-3611

Services

FUEL: 100LL, Jet A
 FBO:
 Byerly Aviation
 309-697-6300

Airport Manager: Bruce Carter - 309-697-8272



Communication

TWR/CTAF: 122.7
 GND CON:
 ATIS:
 UNICOM: 122.7
 APP/DEP:PIA 125.8
 RCO:
 LIGHTS: 122.7

Navigation

ELEV: 785'
 LAT: 40°47.72'
 LON: 89°36.80'
 VOR: 115.2 PIA
 046° 10.7 NM
 AWOS:

Services

FUEL: 100LL, Jet A
 FBO:
 Northpoint Aviation
 309-693-1908

Airport Manager: Dennis Driscoll - 309-693-2372
 1000' Pattern



Communication

TWR/CTAF: 123.0
 GND CON:
 ATIS:
 UNICOM: 123.0
 APP/DEP:CHI 123.75
 RCO:
 LIGHTS: 123.0

Navigation

ELEV: 654'
 LAT: 41°21.11'
 LON: 89°09.19'
 VOR: 114.7 BDF
 060° 22.8 NM
 AWOS: 230
 815-223-8442

Services

FUEL: 100LL, Jet A
 FBO:
 City of Peru
 815-223-8441
 Midwest AVTECH
 815-223-2003

Airport Manager: Don Kowalczyk 815-223-8441
 NDB on field - 230 (VYS)

**Communication**

TWR/CTAF: 122.8
 GND CON:
 ATIS:
 UNICOM: 122.8
 APP/DEP:MKC 125.3
 RCO:
 LIGHTS:

Navigation

ELEV: 400'
 LAT: 37°58.67'
 LON: 89°21.63'
 VOR: 115.0 ENL
 196° 28.2 NM
 AWOS:

Services

FUEL: 100LL, MOGAS
 FBO:
 Cherokee Aero Aviation
 618-357-8611

Airport Manager: Mike Parkinson - 618-357-2211
 NDB on field - 215 (PJY)

**Communication**

TWR/CTAF: 122.8
 GND CON:
 ATIS:
 UNICOM: 122.8
 APP/DEP:MKC 135.52
 RCO:
 LIGHTS: 122.8

Navigation

ELEV: 710'
 LAT: 39°38.37'
 LON: 90°46.77'
 VOR: 113.6 UIN
 113° 26.3 NM
 AWOS:

Services

FUEL: 100LL
 FBO:
 Wharton Aviation Serv.
 217-285-6027

Airport Manager: Rusty Wharton - 217-285-6027
 NDB on field - 344 (PPQ)



Communication
 TWR/CTAF: 122.9
 GND CON:
 ATIS:
 UNICOM:
 APP/DEP:CHI 133.5
 RCO:
 LIGHTS: 708-759-1555

Navigation

ELEV: 670'
 LAT: 41°41.76'
 LON: 88°07.75'
 VOR: 112.3 JOT
 041° 12.4 NM
 AWOS:

Services

FUEL: 80,100LL
 FBO: A&M Aviation
 708-759-1555
 B&B Aircraft Corp.
 708-759-9223
 Sullivan Aviation
 708-759-1188

Airport Manager: O. Boyd Clow - 708-759-9223

**Communication**

TWR/CTAF: 122.8
 GND CON:
 ATIS:
 UNICOM: 122.8
 APP/DEP:CHI 124.55
 RCO:
 LIGHTS: 122.8

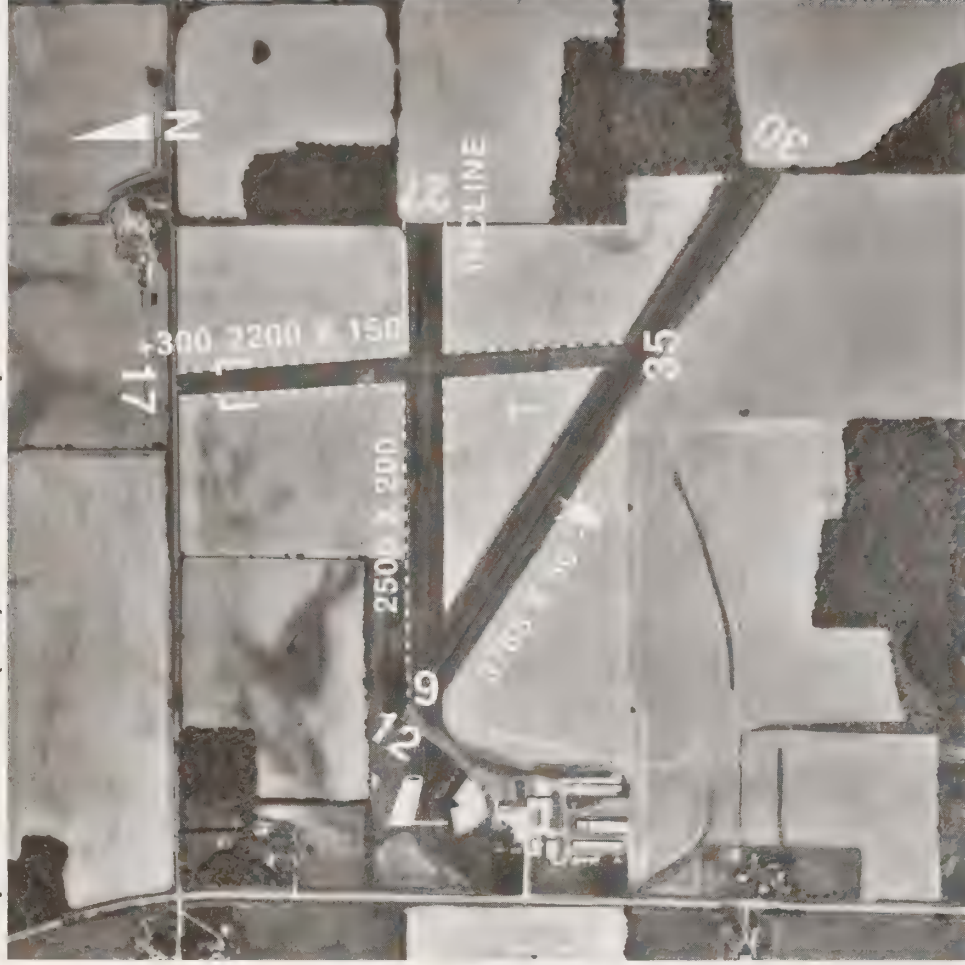
Navigation

ELEV: 659'
 LAT: 40°55.42'
 LON: 88°37.53'
 VOR: 109.6 PNT
 036°
 AWOS:

Services

FUEL: 100LL,
 FBO:
 Precision Aviation Inc.
 815-842-3738

Airport Manager: Brad or Greg Brady - 815-842-3738



Communication

TWR/CTAF: 122.8
 GND CON:
 ATIS:
 UNICOM: 122.8
 APP/DEP:RFD 121.0
 RCO:
 LIGHTS:

Services

FUEL: 100LL
 FBO:
 Belvidere Aviation
 815-544-3471
 Belvidere Airmotive
 815-544-2300

Navigation

ELEV: 856'
 LAT: 42°19.36'
 LON: 88°50.19'
 VOR: 110.8 RFD
 069° 17.2 NM
 AWOS:

Airport Manager: Steve Thomas - 815-544-3471
 1000' Pattern



Communication

TWR/CTAF: * 121.75
 GND CON: 121.75
 ATIS:
 UNICOM: 123.0
 APP/DEP:MKC 135.52
 RCO:
 LIGHTS: 123.0

Navigation

ELEV: 769'
 LAT: 39°56.56'
 LON: 91°11.67'
 VOR: 113.6 UIN
 029° 6.9 NM
 AWOS: 118.325
 217-885-3653

Services

FUEL: 100LL, Jet A
 FBO:
 Heetco Jet Center
 217-885-3627

Airport Manager: David Smith - 217-885-3241
 *135.25/123.0

Tower operational weekends only. See A/FD

**Communication**

TWR/CTAF: 123.0
 GND CON:
 ATIS:
 UNICOM: 123.0
 APP/DEP:HUF 119.25
 RCO:
 LIGHTS: 123.0

Navigation

ELEV: 462'
 LAT: 39°00.96'
 LON: 87°38.99'
 VOR: 108.4 RSV
 On Field
 AWOS:

Services

FUEL: 100LL,Jet A
 MOGAS
 FBO:
 Bonelli Aerodrome
 618-586-2358

Airport Manager: Judy Bonelli - 618-586-2538
 NDB on field - 391 (PLX)



Communication

TWR/CTAF: 122.8
 GND CON:
 ATIS:
 UNICOM: 122.8
 APP/DEP:RFD 126.0
 RCO:
 LIGHTS: 122.8

Navigation

ELEV: 781'
 LAT: 41°53.58'
 LON: 89°04.70'
 VOR: 111.2 PLL
 099°
 AWOS: 20.4 NM

Services

FUEL: 100LL, Jet A
 FBO:
 Bresson Flying Service
 Inc.
 815-562-4617

Airport Manager: Keith Scott - 815-562-2494



Communication

TWR/CTAF: 122.8
 GND CON:
 ATIS:
 UNICOM: 122.8
 APP/DEP:RFD 126.0
 RCO:
 LIGHTS:

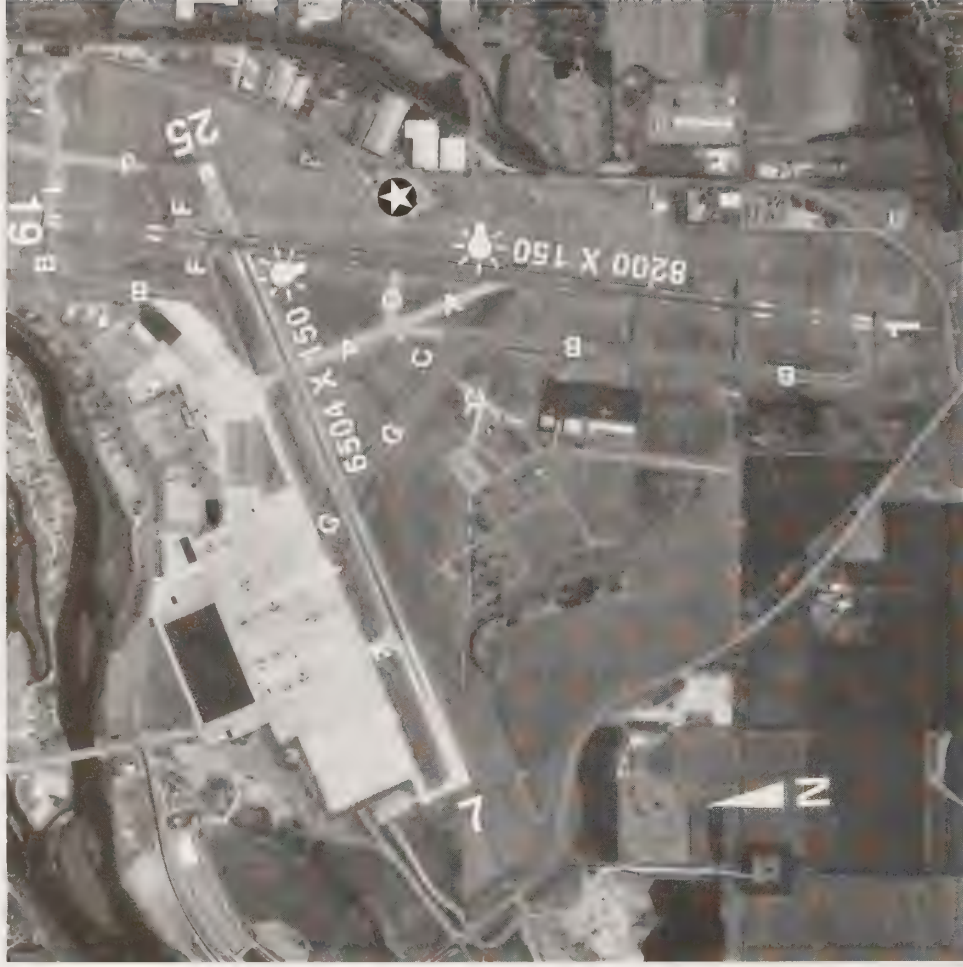
Navigation

ELEV: 741'
 LAT: 42°17.50'
 LON: 89°08.17'
 VOR: 110.8 RFD
 034° 5 NM
 AWOS:

Services

FUEL:
 FBO:

Airport Manager: Lewis Moon - 815-965-3050



Communication

TWR/CTAF: 118.3
 GND CON: 121.9
 ATIS: 126.7
 UNICOM: 122.95
 APP/DEP: *
 RCO: IKK FSS 122.65
 LIGHTS:

Navigation

ELEV: 736'
 LAT: 42°11.77'
 LON: 89°05.59'
 VOR: 110.8 RFD
 110° 5.1 NM
 AWOS: 815-399-0627

Services

FUEL: 100LL, Jet A
 FBO: Aero Taxi, RFD
 815-963-4444
 Alpine Aviation
 815-962-8504
 Pride Aircraft
 815-229-7743
 Raytheon Acft. Systems
 815-987-4100

Airport Manager: James Loomis 815-965-8639

*APP/DEP: 121.0E/ 126.0W

**Communication**

TWR/CTAF: 122.8
 GND CON:
 ATIS:
 UNICOM: 122.8
 APP/DEP:CHI 133.5
 RCO:IKK FSS 122.5
 LIGHTS: 122.8

Navigation

ELEV: 668'
 LAT: 41°36.51'
 LON: 88°05.46'
 VOR: 112.3 JOT
 068° 10.9 NM
 AWOS:

Services

FUEL:80, 100LL, Jet A
 FBO:
 Joliet Regional Port
 District
 815-838-9512 or
 815-838-9497

Airport Manager: Chris Lawson - 815-838-9497



Communication

TWR/CTAF: 123.0
 GND CON:
 ATIS:
 UNICOM:
 APP/DEP:
 RCO:
 LIGHTS: 123.0

Navigation

ELEV: 665'
 LAT: 40°07.05'
 LON: 90°35.42'
 VOR: 113.6 UIN
 058° 36 NM
 AWOS:

Services

FUEL:
 FBO:
 Rushville Flying Club
 217-322-6117

Airport Manager: Leslie Ward - 217-322-6019
 Airport attended irregularly

**Communication**

TWR/CTAF: 122.8
 GND CON:
 ATIS:
 UNICOM: 122.8
 APP/DEP: STL 124.2
 RCO:
 LIGHTS: 122.8

Navigation

ELEV: 477'
 LAT: 38°43.97'
 LON: 89°48.39'
 VOR: 116.0 TOY
 090° 5.3 NM
 AWOS:

Services

FUEL: 100LL
 FBO:
 Shafer Flying Service
 618-644-5411

Airport Manager: Edward & Lois Shafer - 618-644-5411

**Communication**

TWR/CTAF: 122.8
 GND CON:
 ATIS:
 UNICOM: 122.8
 APP/DEP:MKC 127.7
 RCO:
 LIGHTS:

Navigation

ELEV: 574'
 LAT: 38°38.57'
 LON: 88°57.85'
 VOR: 115.0 ENL
 030°
 AWOS:

Services

FUEL: 100LL
 FBO:
 Tate's Flying Service
 618-548-2411

Airport Manager: Leon Tate - 618-548-2411
 NDB on field - 400 (SLO)



Communication

TWR/CTAF: 122.7
 GND CON:
 ATIS:
 UNICOM: 122.7
 APP/DEP:MLI 125.95
 RCO:
 LIGHTS: 122.7

Navigation

ELEV: 616'
 LAT: 42°02.75'
 LON: 90°06.46'
 VOR: 111.2 PLL
 278° 26.5 NM
 AWOS:

Services

FUEL:
 FBO:

Airport Manager: Dale Brown - 815-273-3555



Communication

TWR/CTAF: 123.0
 GND CON:
 ATIS:
 UNICOM: 123.0
 APP/DEP:CHI 133.50
 RCO:
 LIGHTS: 123.0

Navigation

ELEV: 801'
 LAT: 41°59.36'
 LON: 88°06.08'
 VOR: 113.9 ORD
 269° 8.8 NM
 AWOS:

Services

FUEL: 80, 100LL
 FBO:
 Northwest Flyers
 847-985-9777

Airport Manager: 708-980-9779

**Communication**

TWR/CTAF: 122.8
 GND CON:
 ATIS:
 UNICOM: 122.8
 APP/DEP:MKC 124.3
 RCO:
 LIGHTS:

Navigation

ELEV: 618'
 LAT: 39°24.63'
 LON: 88°50.73'
 VOR: 117.2 DEC
 176° 19.6 NM
 AWOS:

Services

FUEL: 100LL
 FBO:
 B&M Aviation
 217-774-4111

Airport Manager: Mike Potter - 217-774-4111
 NDB ON FIELD - 365 (SYZ)

**Communication**

TWR/CTAF: 122.8
 GND CON:
 ATIS:
 UNICOM: 122.8
 APP/DEP:STL 125.2
 RCO:
 LIGHTS: 122.8

Navigation

ELEV: 538'
 LAT: 38°08.94'
 LON: 89°41.92'
 VOR: 115.0 ENL
 234° 30.2 NM
 AWOS:

Services

FUEL:100LL, JetA,
 FBO:
 Sparta Aero Services
 618-443-2002

Airport Manager: Marvin Campbell - 618-443-2002
 NDB on field - 239 (SAR)



Communication

TWR/CTAF:	121.3
GND CON:	121.9
ATIS:	127.65
UNICOM:	122.95
APP/DEP:	118.6
RCO:STL FSS	122.25
LIGHTS:	121.3

Navigation

ELEV:	597'
LAT:	39°50.64'
LON:	89°40.66'
VOR:	112.7 CAP
	216°
AWOS:	127.65
	217-789-7389

Services

FUEL:	100LL, Jet A
FBO:	Garrett Aviation
	217-544-3431
	McClelland Aviation
	217-544-9027

Airport Manager: Robert O'Brien, Jr. - 217-788-1060

**Communication**

TWR/CTAF: 122.9
 GND CON:
 ATIS:
 UNICOM:
 APP/DEP:SPI 118.6
 RCO:
 LIGHTS:

Navigation

ELEV: 590'
 LAT: 39°41.10'
 LON: 89°35.90'
 VOR: 112.7 CAP
 170°
 AWOS:

Services

FUEL:
 FBO:

Airport Manager: David Holmes - 217-498-7312 or 217-529-6601
 Airport attended irregularly

Airspace Class: G (IFR) Sterling-Rock Falls-Whiteside Co. SQI



Communication

TWR/CTAF: 123.0
GND CON:
ATIS:
UNICOM: 123.0
APP/DEP:RFD 126.0
RCO:
LIGHTS: 123.0

Navigation

ELEV: 647'
LAT: 41°44.57'
LON: 89°40.58'
VOR: 111.2 PLL
204°
15 NM
AWOS: 119.17
815-626-2704

Services

FUEL: 100LL, Jet A
FBO:
Aviation Training
Professional
815-625-9533

Airport Manager: Howard Miller - 815-625-9533

**Communication**

TWR/CTAF: 122.8
 GND CON:
 ATIS:
 UNICOM:
 APP/DEP:
 RCO:
 LIGHTS:

Navigation

ELEV: 653'
 LAT: 41°07.72'
 LON: 88°48.12'
 VOR: 109.6 PNT
 348°
 AWOS:

Services

FUEL: 100LL
 FBO:
 Contact Airport
 Manager

Airport Manager: Rocky Rothrock - 815-672-6476



Communication

TWR/CTAF: 122.8
 GND CON:
 ATIS:
 UNICOM: 122.8
 APP/DEP:SPI 118.6
 RCO:
 LIGHTS: 122.8

Navigation

ELEV: 622'
 LAT: 39°32.05'
 LON: 89°19.67'
 VOR: 117.2 DEC
 238° 25 NM
 AWOS: 395
 217-824-9323

Services

FUEL: 80,100LL
 FBO:
 Taylorville Air Service
 217-824-9313

Airport Manager: Jack Kennedy - 217-287-7022
 NDB on field - 395 (TAZ)
 Parachute jumping



Communication

TWR/CTAF: 122.9
 GND CON:
 ATIS:
 UNICOM:
 APP/DEP:
 RCO:
 LIGHTS:

Navigation

ELEV: 665'
 LAT: 39°46.85'
 LON: 88°18.37'
 VOR: 110.0 CMI
 182°
 15 NM
 AWOS:

Services

FUEL: 80,100LL
 FBO:
 T.A.I.L.
 217-253-9504

Airport Manager: Judd Nogle - 217-253-9504
 Attended Monday-Friday

**Communication**

TWR/CTAF: 122.8
 GND CON:
 ATIS:
 UNICOM: 122.8
 APP/DEP:CMI 121.35
 RCO:
 LIGHTS:

Navigation

ELEV: 735'
 LAT: 40°08.79'
 LON: 88°11.93'
 VOR: 110.0 CMI
 025° 7.6 NM
 AWOS:

Services

FUEL: 100LL, Jet A
 FBO:
 Frasca Air Services
 217-367-8441

Airport Manager: Tom Frasca - 217-367-8441



Communication

TWR/CTAF: 122.8
 GND CON:
 ATIS:
 UNICOM: 122.8
 APP/DEP:MKC 127.7
 RCO:
 LIGHTS: 122.8

Navigation

ELEV: 537'
 LAT: 38°59.48'
 LON: 89°09.97'
 VOR: 114.3 VLA
 178° 6.1 NM
 AWOS:

Services

FUEL: 100LL, Jet A
 MOGAS
 FBO:
 Freedom Aviation
 800-283-JUMP(5867)

Airport Manager: Dave Verner 618-283-4973
 Parachute Jumping



Communication

TWR/CTAF: 123.0
 GND CON:
 ATIS:
 UNICOM: 123.0
 APP/DEP: EVV 125.6
 RCO:
 LIGHTS:

Navigation

ELEV: 414'
 LAT: 38°41.29'
 LON: 87°33.13'
 VOR: 113.5 LWV
 156° 5.2 NM
 AWOS:

Services

FUEL: 100LL
 FBO:
 Aviation Maintenance
 Technology
 Vincennes University
 812-885-4104
 618-884-9049

Airport Manager: Rick Weidig - 618-884-9049
 NDB on field - 251 (OEA)



Communication

TWR/CTAF: 120.05
 GND CON: 121.65
 ATIS: 132.4
 UNICOM: 131.85
 APP/DEP:CHI 120.55
 RCO:
 LIGHTS: 120.05

Navigation

ELEV: 727'
 LAT: 42°25.33'
 LON: 87°52.07'
 VOR: 113.0 OBK
 015°
 AWOS:
 12.5 NM

Services

FUEL: 100LL, Jet A,
 MOGAS
 FBO:
 D.B. Aviation
 847-336-1120

Airport Manager: K. Neil Otterbacher - 847-244-0055



Communication

TWR/CTAF: 120.9
 GND CON: 121.8
 ATIS: 124.8
 UNICOM: 122.95
 APP/DEP:CHI 133.5
 RCO:
 LIGHTS: TWR CNTRLD

Navigation

ELEV: 758'
 LAT: 41°54.40'
 LON: 88°14.91'
 VOR: 108.4 DPA
 076° 4.7 NM
 AWOS:

Services

FUEL: 100LL, Jet A,
 FBO:DuPage Flt.Cent.
 630-208-5600
 JA Air-630-584-3200
 Mukenschnabl
 630-584-7570
 Scott Aviation
 630-513-2272

Airport Manager: Thomas H Fawell, Sr. - 708-584-2211



Communication

TWR/CTAF:	119.9
GND CON:	121.7
ATIS:	124.2
UNICOM:	122.95
APP/DEP:CHI	120.55
RCO:	
LIGHTS:	119.9

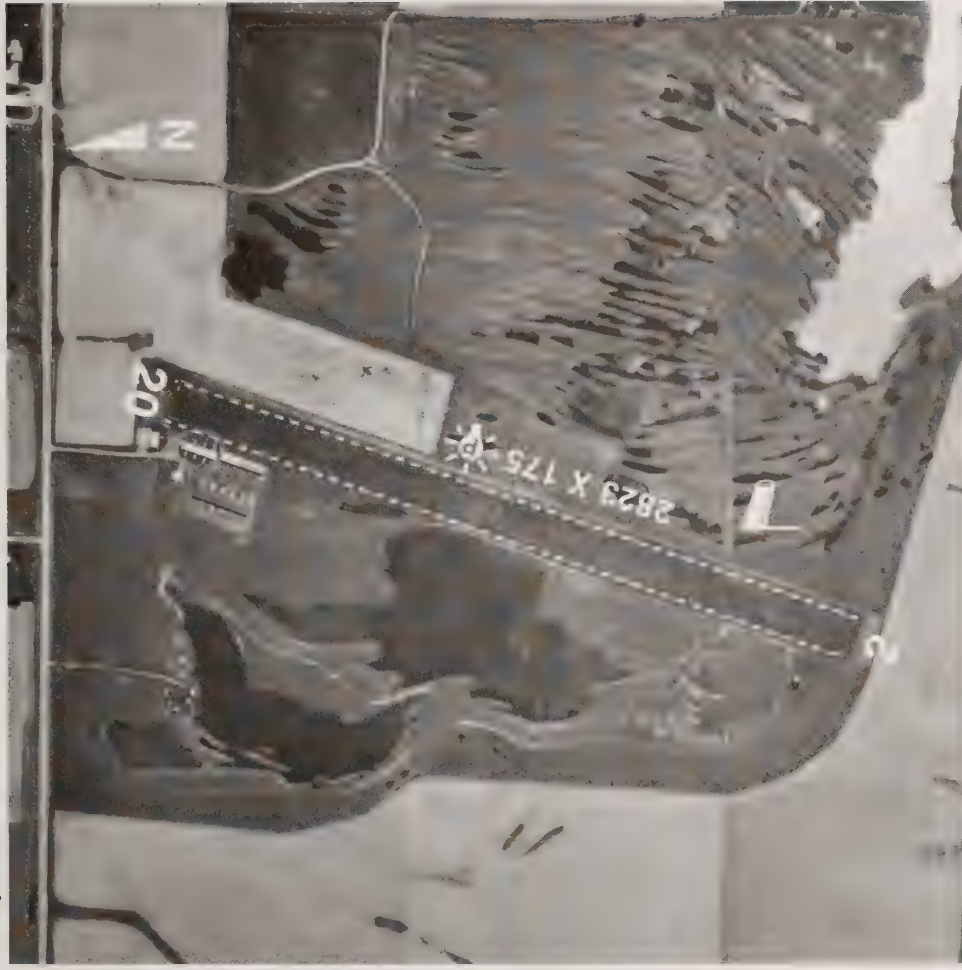
Navigation

ELEV:	647'
LAT:	42°06.82'
LON:	87°54.09'
VOR:	113.0 OBK
159°:	7 NM
AWOS:	847-465-0291
	847-465-0292
	847-465-0293

Services

FUEL:	100LL, Jet A
FBO:	
	Service Aviation
	847-808-9690
	Priester Aviation
	847-537-1200

Airport Manager: Fred E. Stewart, Jr. - 847-537-2580



Communication

TWR/CTAF: 122.9
 GND CON:
 ATIS:
 UNICOM:
 APP/DEP: PIA 125.8
 RCO:
 LIGHTS: 122.9

Navigation

ELEV: 661'
 LAT: 40°46.44'
 LON: 90°04.46'
 VOR: 115.2 PIA
 290° 13 NM
 AWOS:

Services

FUEL:
 FBO:
 Tri County Airport
 Development Corp.
 309-742-8668

Airport Manager: Don Bride - 309-358-1168

DIRECTORY

ILLINOIS DEPARTMENT OF TRANSPORTATION DIVISION OF AERONAUTICS CAPITAL AIRPORT SPRINGFIELD, ILLINOIS

EXECUTIVE OFFICE

William L. Blake

Director

217-785-8515

David H. Lewis

Deputy Director

BUREAU OF ADMINISTRATIVE SERVICES

Steve Cooper

Bureau Chief

217-785-8512

Business Services Section

Harry Smedley

Section Chief

Contracts Section

Ralph Davison

Section Chief

Financial Services

Viola Cox

Section Chief

Information Systems Section

Barry Vaughn

Section Chief

Personnel

Twyla Bryan

Manager

BUREAU OF AVIATION EDUCATION & SAFETY

James Bildilli

Bureau Chief

217-785-8516

Aviation Development

Don Gamble

Manager

217-785-8380

Aviation Education

Jan Draper

Editor/Illinois Aviation

217-785-5821

CAP Affairs

James Battista

Manager

312-793-2436

Pilot & Aircraft Registration

Brenda Brennan

Supervisor

217-785-8223

Safety Section

Gary Stevens

Flight Safety Coordinator

Northern Illinois Region

217-785-5746

Don Cramer

Flight Safety Coordinator

Central Illinois Region

217-785-5798

Dale Rust

Flight Safety Coordinator

Southern Illinois Region

217-524-5269

BUREAU OF AIRPORT ENGINEERING

Roger H. Barcus

Chief Engineer

217-785-8514

Construction Section

Hank Priestler

Construction Engineer

Construction Field Engineer

Jeff Litherland

Assoc. Construction Engineer

Jim Anderson

Assoc. Airport Construction Engineer

Jay Christians

BUREAU OF AIRPORT ENGINEERING continued

Design Section

Steve Long Chief Design Engineer
Gene Miner Design Engineer – Northern Illinois
Mike Haun Design Engineer – Southern Illinois
Mike Senalik Design Engineer – G.A. Airports

Land Acquisition

Terry Tappenbeck Land Acquisition Engineer
Lee Casteel Land Acquisition Coordinator

Materials Section

Mike Wilhelm Materials Engineer
Del Reeves Materials Certification Engineer

Planning & Programming Section

Paul Kramer Program Engineer
Terry Schaddel Airport Planning & Environmental Officer
Dan Heffern Planning & Environmental Engineer
Roger Finnell Airspace Specialist
Rob Pruitt Special Programs Manager
Rhonda Reincke Airport Data Analyst
John Plummer Engineering Technician

BUREAU OF AIR OPERATIONS

Richard Wray

217-785-8544

Flight Operations Section

Earl Varvel
John Hauch

Bureau Chief
Chief Pilot, Fixed Wing
Chief Pilot, Rotary Wing

Maintenance Section

Richard Wussler

217-785-3275

AIRPORT OPERATIONS-HAND SIGNALS



SIGNALMAN DIRECTS
TOWING



SIGNALMAN'S POSITION



FLAGMAN DIRECTS PILOT TO
SIGNALMAN IF TRAFFIC
CONDITIONS REQUIRE



ALL CLEAR
(O.K.)



START
ENGINE

POINT
TO
ENGINE
TO BE
STARTED



PULL
CHOCKS



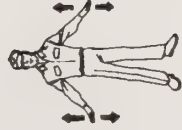
COME
AHEAD



LEFT
TURN



RIGHT
TURN



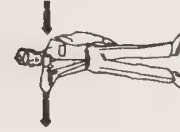
SLOW
DOWN



STOP



INSERT
CHOCKS



CUT
ENGINES



NIGHT
OPERATION
(Use same hand
movements as day
operation)



EMERGENCY
STOP

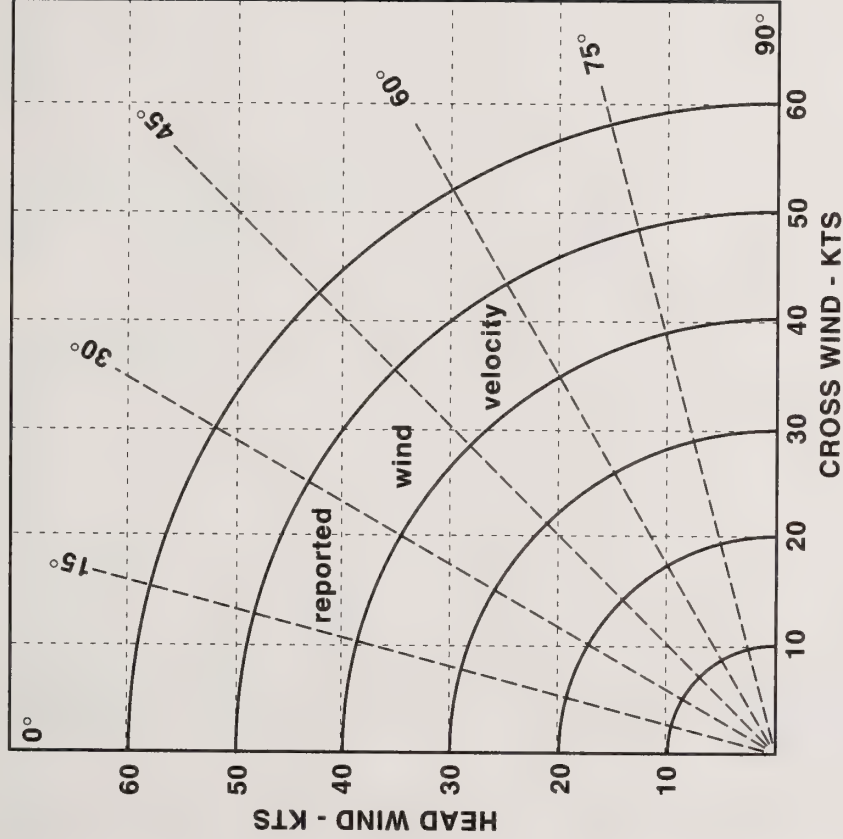
Light Gun Signals

COLOR AND TYPE OF SIGNAL	ON THE GROUND	IN FLIGHT
STEADY GREEN	Clear for take-off.	Cleared to land.
FLASHING GREEN	Cleared to taxi.	Return for landing (to be followed by steady green at proper time).
STEADY RED	Stop.	Give way to other aircraft and continue circling.
FLASHING RED	Taxi clear of landing area (runway) in use.	Airport unsafe - do not land.
FLASHING WHITE	Return to starting point on airport.	
ALTERNATING RED & GREEN	General Warning Signal.	Exercise Extreme Caution.

Phonetic Alphabet and Morse Code

Alfa:	• -	Sierra:	• • •
Bravo:	- • • •	Tango:	-
Charlie:	- • • - •	Uniform:	• • -
Delta:	- • •	Victor:	• • • -
Echo:	•	Whiskey:	• - -
Foxtrot:	• • - •	X-ray:	- • • -
Golf:	- - •	Yankee:	- • - -
Hotel:	• • • •	Zulu:	- - • •
India:	• •	1.	• - - - -
Juliett:	• - - - -	2.	• • - - -
Kilo:	- • -	3.	• • • - -
Lima:	• - • •	4.	• • • • -
Mike:	- -	5.	• • • • •
November:	- •	6.	- • • • •
Oscar:	- - -	7.	- - • • •
Papa:	• - - •	8.	- - - • •
Quebec:	- - • • -	9.	- - - - • •
Romeo:	• - •	0.	- - - - -

WIND CHART FOR TAKEOFF



INSTRUCTIONS

1. Determine maximum 90° Cross Wind that you can handle.
(Suggest 20% X Stall Speed). Place dot on 90° line at this value.
2. Determine maximum 45° Cross Wind that you can handle.
(Suggest 30% X Stall Speed). Place dot on 45° line at this value.
3. Determine maximum Head Wind that you can handle.
(Suggest 60% X Stall Speed). Place dot on 0° line at this value.
4. Connect dots with red line. Values to left of line are go wind velocities and directions.

METAR ABBREVIATIONS

ABBREVIATIONS

AO1	Automated Observation without precipitation discriminator (rain/snow)
AO2	Automated Observation with precipitation discriminator (rain/snow)
AMD	Amended Forecast (TAF)
BECMG	Becoming (expected between 2 digit beginning hour and 2 digit ending hour)
BKN	Broken
CLR	Clear at or below 12,000 feet (AWOS/ASOS report)
COR	Correction to the observation
FEW	1 or 2 octas (eighths) cloud coverage
FM	From (4 digit beginning time in hours and minutes)
LDG	Landing
M	In temperature field means "minus" or below zero
NO	In RVR listing indicates visibility less than lowest reportable sensor value (e.g. M600)
NSW	No Significant Weather
OVC	Overcast
P	In RVR indicates visibility greater than highest reportable sensor value (e.g. P6000FT)
P6SM	Visibility greater than 6 SM (TAF only)
PROB40	Probability 40 percent
R	Runway (used in RVR measurement)
RMK	Remark
RY/RWY	Runway
SCT	Scattered
SKC	Sky Clear
SLP	Sea Level Pressure (e.g., 1013 reported as 013)
SM	Statute mile(s)
SPECI	Special Report
TEMPO	Temporary changes expected (between 2 digit beginning hour and 2 digit ending hour)
TKOFT	Takeoff

T01760158, 10142, 20012 and 401120084 in Remarks-examples of temperature information

V Varies (wind direction and RVR)

VC Vicinity

VRB Variable wind direction when speed is less than or equal to 6 knots

VV Vertical Visibility

WS Wind shear (in TAFs, low level and not associated with convective activity)

DESCRIPTORS

BC	Patches	MI	Shallow
BL	Blowing	PR	Partial
DR	Low Drifting	SH	Showers
FZ	Supercooled/freezing	TS	Thunderstorm

WEATHER PHENOMENA

BR	Mist	PE	Ice Pellets
DS	Dust Storm	PO	Dust/Sand Whirls
DU	Widespread Dust	PY	Spray
DZ	Drizzle	RA	Rain
FC	Funnel Cloud	SA	Sand
+FC	Tornado/Water Spout	SG	Snow Grains
FG	Fog	SN	Snow
FU	Smoke	SQ	Squall
GR	Hail	SS	Sandstorm
GS	Small Hail/Snow Pellets	UP	Unknown Precipitation (Automated Observations)
HZ	Haze	VA	Volcanic Ash
IC	Ice Crystals		

CLOUD TYPES

CB	Cumulonimbus	TCU	Towering Cumulus
----	--------------	-----	------------------



Illinois Department of Transportation

Division of Aeronautics
One Langhorne Bond Drive /Capital Airport
Springfield, Illinois 62707-8415

Biennial Application for Registration of Federal Airman Certificate

New Registration Renewal Registration Exempt from Registration
(Mark Category on Exemptions that Apply)

F.A.A. Certificate Number _____ Phone Number () _____

Name _____ Last _____ First _____ MI _____

Address _____ Street _____

City _____ State _____ Zip _____

County _____ Sex _____ Date of Birth _____

Please check the applicable certificates and qualifications below:

Type Certificate

- ATP - Airline Transport Pilot
- COM - Commercial
- PVT - Private
- REC - Recreational
- STU - Student
- ULT - Ultralight

Other Qualifications

- A - Interstate Commerce
- B - Lighter Than Air Free Balloon
- C - Control Tower Operator
- D - Hot Air Balloon
- E - Flight Engineer
- I - Instrument
- N - Flight Navigator
- O - Glider
- X - Rotorcraft/Helicopter
- Y - Rotorcraft/Gyro
- Z - Government

Flight Instructor Certificates

- F - F/Instrument
- J - F/Rotorcraft
- K - F/Rotorcraft/Instrument
- L - F/Glider
- M - F/Glider/Instrument
- T - F/Rotorcraft/Glider
- U - F/Glider/Rotorcraft/Instrument
- G - F/Airplane
- H - F/Airplane/Instrument
- P - F/Airplane/Rotorcraft
- Q - F/Airplane/Rotorcraft/Instrument
- R - F/Airplane/Glider
- S - F/Airplane/Glider/Instrument
- V - F/Airplane/Glider/Rotorcraft
- W - F/Airplane/Glider/Rotorcraft/Instrument
- * - F/Multi Engine

Engine Class

- 400 - SEL
- 500 - SES
- 600 - SELS
- 440 - SEL/MEL
- 540 - SES/MEL
- 640 - SEL/MEL
- 460 - SEL/MELS
- 040 - MEL
- 050 - MES
- 060 - MELS
- 650 - SEL/MES
- 560 - SES/MELS
- 660 - SELS/MELS
- 450 - SEL/MES
- 550 - SES/MES
- 650 - SELS/MES

Exemptions From Registration

- Fly Interstate Commerce (Only)
- Temporarily Ceased Flying
- Moved Out-of-State
- Fly For Government (Only)
- Airman is Deceased
- Currently Not Air Navigating in IL
- Permanently Ceased Flying

I hereby certify that I am the holder of the above described FAA Airman Certificate and that the same is in full force and effect.

Signature _____ Date _____ AER 1967 (Rev. 11/94)

1. Complete this application by providing pertinent information from your Federal Airman Certificate. **Print** or **type** all information. Illegible or incomplete applications will be returned.
2. Make remittance payable to **State Treasurer of Illinois**. The fee is **\$10.00** when paid within the first half of the current biennial registration cycle. Applicants who register within the second half of the current biennial cycle must pay **\$5.00**. You may contact this office if you are unsure of the current cycle.
3. Submit check, post office draft, express telegraph or currency exchange money order with application to the following address:

Illinois Department of Transportation
Division of Aeronautics
One Langhorne Bond Drive / Capital Airport
Springfield, Illinois 62707-8415
(217) 785-8223

The Division of Aeronautics will not accept stamps and assumes no responsibility for the loss of currency sent through the mail.

Operation of an aircraft without proper registration of a Federal Airman Certificate is a Class A misdemeanor punishable by a fine not to exceed \$1,000 and/or up to one year in jail. **See 620ILCS 5/42 (1992) IL Compiled Statutes.**

Place
Postage
Here

Illinois Department of Transportation
Division of Aeronautics
One Langhorne Bond Drive / Capital Airport
Springfield, Illinois 62707-8415



Illinois Department of Transportation

Division of Aeronautics
One Langhorne Bond Drive / Capital Airport
Springfield, Illinois 62707-8415

Biennial Application for Registration of Federal Aircraft Certificate

- New Registration
- Renewal Registration
- Exempt from Registration

N-Number _____

Owner _____ Last Name _____ First _____
 Street Address _____
 City / State _____ Zip Code _____
 County _____ Phone Number(s) () _____ () _____
 Home _____ Office _____

Make _____ Model _____ Year _____
 Serial No. _____ Seats _____ Number Engines _____
 Base Airport _____ Horsepower _____

Please check the most applicable number in each of the following categories:

Engine Type	Aircraft Type	Primary Use	Exempt (only operated in the following)
<input type="checkbox"/> 0-No Engine	<input type="checkbox"/> 1-Glider	<input type="checkbox"/> 0-Dealer	<input type="checkbox"/> 0-Dealership
<input type="checkbox"/> 1-Reciprocating	<input type="checkbox"/> 2-Balloon	<input type="checkbox"/> 1-Interstate Commerce	<input type="checkbox"/> 1-Interstate Commerce
<input type="checkbox"/> 2-Turboprop	<input type="checkbox"/> 3-Blimp/Dirigible	<input type="checkbox"/> 2-Business	<input type="checkbox"/> 7-Government
<input type="checkbox"/> 3-Turboshaft	<input type="checkbox"/> 4-Fixed Wing SE	<input type="checkbox"/> 3-Personal	
<input type="checkbox"/> 4-Turbojet/Turbo Fan	<input type="checkbox"/> 5-Fixed Wing ME	<input type="checkbox"/> 4-Aerial Application	
<input type="checkbox"/> 5-Turbine	<input type="checkbox"/> 6-Rotorcraft	<input type="checkbox"/> 5-Instruction	
<input type="checkbox"/> 6-Ram Jet	<input type="checkbox"/> 7-Seaplane SE	<input type="checkbox"/> 6-Air Taxi/Charter	
<input type="checkbox"/> 7-Other	<input type="checkbox"/> 8-Seaplane ME	<input type="checkbox"/> 7-Government	
	<input type="checkbox"/> 9-Other	<input type="checkbox"/> 8-Rental Business	
		<input type="checkbox"/> 9-Other	

The above described aircraft was purchased from:
 IL Dealer Out of State Dealer Manufacturer Kit Form Experimental
 Built from Scrap Individual or Private Owner

I / We acquired the above described aircraft:
 New Used on _____ from _____
 Date _____ Name of Seller _____
 Address _____ Street _____ City _____ State _____ Zip _____
 Phone Number _____

I hereby certify that an F.A.A. Airworthiness Certificate has been issued for the above described aircraft and that the same is in full force and effect.

Signature _____ Date _____

Instructions

1. Complete this application by providing pertinent information from your FAA Aircraft Certificate. **PRINT** or **TYPE** all information. Illegible or incomplete applications will be returned.
2. Make remittance payable to the **State Treasurer of ILLINOIS**. The fee is \$20.00 when paid within the first half of the current biennial registration cycle. Applicants who register within the second half of the current biennial cycle must pay \$10.00. You may contact this Division if unsure which half of the current cycle.
3. Submit check, draft, post office, express telegraph or currency exchange money order with application to the following address:

Illinois Department of Transportation
Division of Aeronautics
One Langhorne Bond Dr./Capital Airport
Springfield, Illinois 62707-8415
(217)785-8223

The Division of Aeronautics will not accept stamps and assumes no responsibility for the loss of currency sent through the mail.

- Operation of an aircraft, without proper registration of a Federal Aircraft Certificate with this Department is a Class A misdemeanor punishable by a fine not to exceed \$1000.00 and/or one year in jail. See 620ILCS 5/42 (1992) IL Compiled Statutes.
- Dealer, Interstate Commerce and Government Aircraft Owners must file with proof of exemption.
- Illinois aircraft owners who base out-of-state, but air navigate within Illinois must register with this Division.
- Decals are not transferable from one aircraft to another. Use this form for registering your aircraft. When you sell your aircraft you must notify this Department at the above address by providing the name and address of the new owner.
- Aircraft applications that indicate a purchase from a dealer or manufacturer must include one of the following:
 1. A receipt from the Illinois Department of Revenue showing payment of sales or use tax owed satisfied.
 2. A receipt showing sales or use tax paid with the signature of the seller.
 3. A copy of the Bill of Sale, purchase agreement and/or other documentation indicating the net amount of the transaction. Copies will be forwarded to the Illinois Department of Revenue and your certificate and decal held until a release is received by the Department.

Remember your ELT!

ELT — HOW TO OPERATE IT — ITS LOCATION

BEFORE START UP (or when VHF first switched on),
Listen out on 121.5 Mhz (or 243). If beacon operating:
CHECK REASON then **ADVISE NEAREST FAA FACILITY**.

BEFORE SHUT DOWN

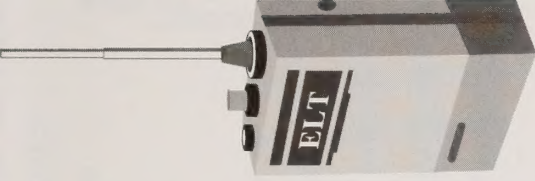
Listen out of 121.5 Mhz. If beacon operating:
SWITCH IT OFF then **ADVISE NEAREST FAA FACILITY**.

IF YOU CRASH

Ensure beacon operating.

Once operating, **NEVER** switch off. (If circumstance requires
ALL survivors to leave aircraft, take beacon if possible).

When storing beacons, deactivate by removing batteries
(noting removal for future reference).



The first part of the report deals with the general situation of the country and the progress of the war. It is followed by a detailed account of the operations of the army and the navy. The report concludes with a summary of the results of the war and a statement of the author's views on the future of the country.

The author's views on the future of the country are based on a study of the history of the country and a comparison of the country with other countries. He believes that the country should continue to develop and that the government should be reformed.

The report is a valuable contribution to the history of the country and to the study of the war. It is well written and contains a wealth of information.

Before Start Up FLIGHT PLAN SEQUENCE

Type flight plan
Aircraft identification
A/C type/Equipment
Est. TAS
Point of departure
Proposed dep. time
Cruising altitude(s)
Route
Destination

Est. time enroute
Remarks
Fuel (hrs./min.)
Alternate airport
Pilot's name
Pilot's address
No. persons aboard
Aircraft color
FSS name for closing

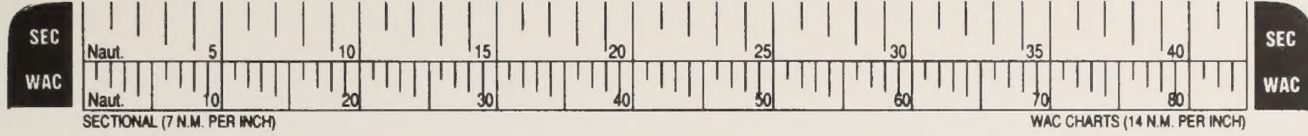
TIME CONVERSION TO UTC (ZULU)

Standard	Daylight Savings
EST +5	EDT +4
CST +6	CDT +5
MST +7	MDT +6
PST +8	PDT +7
Alaska +9	Alaska +8
Hawaii +10	

TRANSPONDER CODES

VFR
HIJACKED AIRCRAFT
RADIO FAILURE
MAYDAY

1200
7500
7600
7700



UNIVERSITY OF ILLINOIS-URBANA



3 0112 033242295